

SOVEREIGN
COURT
LONDON W6

MONTPELLIER HOUSE



*...an exclusive collection of
beautiful new homes, in one
of London's most vibrant
and desirable locations.*

Nikolai Metherell, Architect,
Lifschutz Davidson Sandilands

A unique way of life

London is the world's most vibrant, exhilarating and desirable place to live. An exclusive collection of superbly appointed apartments and penthouses in one of the capital's fastest-rising districts, Sovereign Court offers the very best that life in this extraordinary city has to offer.

A unique opportunity

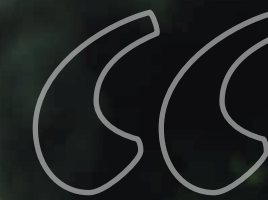
London is booming, with business start-ups, employment and economic growth all far exceeding those anywhere else in the UK. Property values have responded, and a London home remains highly sought-after. With its excellent connectivity, the borough of Hammersmith & Fulham has seen some of the biggest gains, making Sovereign Court an extremely attractive proposition for long-term investment.





Montpellier House

Rising in the heart of W6, the thirteen floors of Montpellier House offer a choice of carefully considered and stunning apartments that set new standards in stylish and contemporary London living.



*I like the spirit of this great London
which I feel around me.*

Charlotte Brontë

Central London is a hive of activity and splendour. Yet just a short step west to the borough of Hammersmith & Fulham, you'll discover a place blessed with over 50 parks and open spaces to walk, run, cycle or simply to relax in. From here one can easily enjoy all that London has to offer to its fullest.

Welcome to Montpellier House, Sovereign Court.



There's no doubt that London works hard — but Londoners also know how to enjoy themselves in style.



The Masterplan

Sovereign Court has been conceived on a grand scale. At the heart of W6, it's a significant and prestigious residential development in one of the most dynamic areas of West London.

Through its design, construction, aesthetics and environmental credentials, Sovereign Court sets new standards for exclusive London property — and redefines what it means to live in one of the world's greatest capital cities.



Interiors & Materials

The interiors at Sovereign Court have been created by award-winning designers. Each of the six interior concepts incorporate premium quality hardwood, marble and other natural materials, skilfully combined with exquisite craftsmanship and meticulous attention to detail.

The materials selected for the interiors reflect its prestigious location. The focus is on natural materials, whose tones and textures create an immediate sense of warmth and familiarity. Individually selected for their quality and provenance, these materials have a tangible integrity, and an enduring beauty.

The Regal Collection

Careful use of contrasting tones and textures give each palette in the Regal Collection its own distinctive aesthetic and ambiance. The Brompton is warm and natural, The Connaught cool and neutral, while The Grosvenor is rich and opulent. Deceptively simple yet incredibly effective, these interiors give your new home a timeless elegance.



The Brompton

A rich blend of sophisticated tones

Wood flooring throughout living rooms and kitchens with carpet to bedrooms. Kitchens feature Zeta Dakar and brown units with polished marble worktops in complementary tones. Wardrobes are constructed in Pamplona oak effect, with painted-glass doors; bathrooms are finished with classic cream marble tiles, with dark oak units and Turkish Light Emprador marble surfaces.

The Connaught

A clean, crisp, contemporary palette

Wood flooring throughout living rooms and kitchens with carpet to bedrooms. Kitchens offer white and chocolate oak units complement and contrast with Bianco white Carrara marble worktops. Bathrooms offer a sophisticated blend of white floor and wall tiles, grey oak units and dark coffee-toned marble. Wardrobes are finished internally in Pamplona oak effect, with dark grey painted-glass doors.

The Grosvenor

Warm, natural tones in perfect harmony

Wood flooring throughout living rooms and kitchens with carpet to bedrooms. Dark grey and brown units contrast elegantly with Blanco Norte marble worktops in kitchens. Bathrooms feature white floor and wall tiles, Pamplona oak effect units and deep brown marble surfaces. Wardrobes boast dark grey painted-glass doors, and Pamplona oak effect interiors.



The Imperial Collection

The Imperial Collection has been specially reserved for our finest apartments and penthouses. The Burlington is warm and restrained, the Sanderson sharp and refined, while the Portman blends a complex palette of natural tones and textures. The finest materials, craftsmanship and design talent combine to create a spectacular, and lasting, effect.



The Burlington

A bold, eclectic mix of colours and tones

Wood flooring throughout living rooms and kitchens with carpet to bedrooms. Solid oak and polished white units combine with dark Karaman Turkish marble to make a strong style statement in the kitchens: light and dark Emprador marble and polished units perform the same alchemy in the bathrooms. Dark leather doors and oak interiors give the wardrobes a sense of purposeful solidity.

The Sanderson

Clean, classical elegance

Wood flooring throughout living rooms and kitchens with carpet to bedrooms. Chocolate oak units contrast sharply with the white doors and polished Bianco Floe marble worktops in kitchens. Bathrooms feature contrasting white and dark polished marble surfaces, with mirrored unit doors. Wardrobe doors are finished in dark leather, with Pamplona oak effect interiors.

The Portman

Light, chic and tranquil

Wood flooring throughout living rooms and kitchens with carpet to bedrooms. Moonlight grey marble worktops and bright white doors contrast with bold, oak veneer units in the kitchens. Bathrooms feature grey polished marble floor and wall tiles with darker contrast marble, and mirrored unit doors. Wardrobes are constructed in Pamplona oak effect with dark leather doors.





Imagery from Dickens Yard penthouse interior for illustrative purposes only





FIRST FLOOR				PAGE
154	2	BED		21
155	2	BED		21
156	2	BED		21
157	2	BED		21
158	1	BED		21
159	2	BED		21
160	2	BED		23

SECOND FLOOR				
168	1	BED		25
169	2	BED		25
170	2	BED		25
171	2	BED		25
172	2	BED		25
173	1	BED		25
174	2	BED		25
175	2	BED		27
182	2	BED		27

THIRD FLOOR				
183	2	BED		29
184	1	BED		29
185	2	BED		29
186	2	BED		29
187	2	BED		29
188	2	BED		29
189	1	BED		29
190	2	BED		29
191	2	BED		31
198	2	BED		31

FOURTH FLOOR				PAGE
199	2	BED		33
200	1	BED		33
201	2	BED		33
202	2	BED		33
203	2	BED		33
204	2	BED		33
205	1	BED		33
206	2	BED		33
207	2	BED		35
208	2	BED		35
209	2	BED		35
210	2	BED		35
211	2	BED		35
212	2	BED		35

FIFTH FLOOR				
213	2	BED		37
214	1	BED		37
215	2	BED		37
216	Elite	3	BED	37/38
217	Elite	3	BED	37/39
218	2	BED		37
219	2	BED		41
220	2	BED		41
221	2	BED		41
222	2	BED		41
223	2	BED		41
224	2	BED		41

SIXTH FLOOR				
225	Elite	3	BED	43/44
226	Elite	3	BED	43/45
227	2	BED		47
228	2	BED		47
229	2	BED		47
230	2	BED		47

SEVENTH FLOOR				PAGE
231	Elite	3	BED	49
232	2	BED		51
233	2	BED		51

EIGHTH FLOOR				
234	Elite	3	BED	53/55
235	2	BED		53
236	2	BED		53

NINTH FLOOR				
237	Elite	3	BED	57/59
238	2	BED		57
239	2	BED		57

TENTH FLOOR				
240	Elite	3	BED	61/63
241	2	BED		61
242	2	BED		61

ELEVENTH FLOOR				
243	Elite	3	BED	65/67
244	2	BED		65
245	2	BED		65

TWELFTH FLOOR				
246	Elite	3	BED	69/71
247	2	BED		69
248	2	BED		69

THIRTEENTH FLOOR				
249	Penthouse	3	BED	73

Floorplans shown are for approximate measurements only. Exact layout and sizes may vary. All measurements may vary within a tolerance of 5%.



Montpellier House

Floorplans

First Floor

MONTPELLIER HOUSE

APARTMENT 154				2 BED
LIVING/DINING	3.62m x 5.69m	12'0" x 18'8"		
KITCHEN	2.15m x 3.07m	7'1" x 10'1"		
BEDROOM 1	3.14m x 3.30m	10'4" x 10'10"		
BEDROOM 2	2.50m x 4.36m	8'2" x 14'4"		

APARTMENT 155				2 BED
LIVING/DINING	3.20m x 6.08m	10'6" x 20'0"		
KITCHEN	3.08m x 2.85m	10'1" x 9'4"		
BEDROOM 1	2.75m x 5.90m	9'0" x 19'4"		
BEDROOM 2	2.75m x 4.41m	9'0" x 14'6"		

APARTMENT 156				2 BED
LIVING/DINING	3.20m x 6.04m	10'6" x 19'10"		
KITCHEN	3.10m x 2.87m	10'2" x 9'5"		
BEDROOM 1	2.75m x 5.32m	9'0" x 17'5"		
BEDROOM 2	2.75m x 4.68m	9'0" x 15'4"		

APARTMENT 157				2 BED
LIVING/DINING	4.49m x 6.76m	14'9" x 22'2"		
KITCHEN	3.26m x 2.50m	10'8" x 8'2"		
BEDROOM 1	2.80m x 5.02m	9'2" x 16'6"		
BEDROOM 2	2.84m x 4.77m	9'4" x 15'8"		

APARTMENT 158				1 BED
LIVING/DINING	3.22m x 6.00m	10'7" x 19'8"		
KITCHEN	3.22m x 2.50m	10'7" x 8'2"		
BEDROOM 1	3.10m x 3.71m	10'2" x 12'2"		

APARTMENT 159				2 BED
LIVING/DINING	3.83m x 5.71m	12'7" x 18'9"		
KITCHEN	2.73m x 2.50m	9'0" x 8'2"		
BEDROOM 1	4.19m x 4.43m	13'9" x 14'6"		
BEDROOM 2	2.86m x 3.80m	9'5" x 12'6"		

- Double switched sockets

Energy efficient downlighter

Pendant light

Energy efficient twin adjustable spotlights
- Speaker

External downlighter

Balcony light

Entry phone
- Telephone point

TV aerial

Master control unit (2 x Double switched sockets, SAT, SKY plus+ HD TV, FM, TV return, BT point)

TM
- Towel rail

Heated wall

Privacy screen

Strip light

Solid ventilation panel
- Washer/Dryer

Fridge/Freezer

Tall unit (may include appliance subject to design)
- Dishwasher

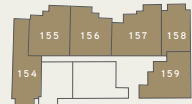
Wine fridge

Coffered ceiling

Floorplans shown are for approximate measurements only. Exact layout and sizes may vary. All measurements may vary within a tolerance of 5%. *Denotes maximum measurements.



ELEVATION



FLOORPLAN



MASTERPLAN



First Floor

APARTMENT 160 2 BED

LIVING/DINING	6.99m x 3.27m	23'0" x 10'9"
KITCHEN	3.03m x 2.47m	10'0" x 8'1"
BEDROOM 1	4.14m x 2.75m	13'7" x 9'0"
BEDROOM 2	4.27m x 2.69m	14'0" x 8'10"

- Double switched sockets

Energy efficient downlighter

Pendant light

Energy efficient twin adjustable spotlights
- Speaker

External downlighter

Balcony light

Entry phone
- Telephone point

TV aerial

Master control unit (2 x Double switched sockets, SAT, SKY plus+ HD TV, FM, TV return, BT point)
- Towel rail

Heated wall

Privacy screen

Strip light

Solid ventilation panel
- Washer/Dryer

Fridge/Freezer

Tall unit (may include appliance subject to design)
- Dishwasher

Wine fridge

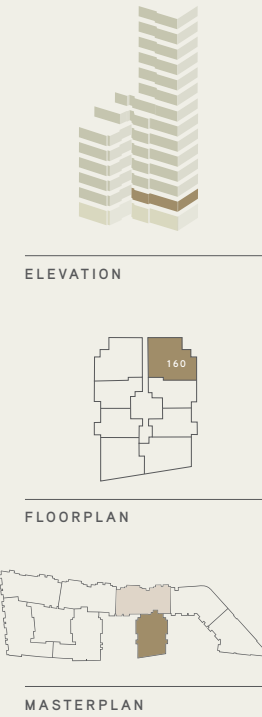
Coffered ceiling

Floorplans shown are for approximate measurements only. Exact layout and sizes may vary. All measurements may vary within a tolerance of 5%. *Denotes maximum measurements.

MONTPELLIER HOUSE



VIEW EAST



Second Floor

MONTPELLIER HOUSE

APARTMENT 168				1 BED
LIVING/DINING	3.73m x 4.78m	12'3" x 15'8"		
KITCHEN	2.30m x 2.64m	7'7" x 8'8"		
BEDROOM 1	2.73m x 4.83m*	9'0" x 15'10"		

APARTMENT 169				2 BED
LIVING/DINING	3.62m x 5.69m	12'0" x 18'8"		
KITCHEN	2.15m x 3.07m	7'1" x 10'1"		
BEDROOM 1	3.14m x 3.30m	10'4" x 10'10"		
BEDROOM 2	2.50m x 4.36m	8'2" x 14'4"		

APARTMENT 170				2 BED
LIVING/DINING	3.20m x 6.08m	10'6" x 20'0"		
KITCHEN	3.08m x 2.85m	10'1" x 9'4"		
BEDROOM 1	2.75m x 5.90m	9'0" x 19'4"		
BEDROOM 2	2.75m x 4.41m	9'0" x 14'6"		

APARTMENT 171				2 BED
LIVING/DINING	3.20m x 6.04m	10'6" x 19'10"		
KITCHEN	3.10m x 2.87m	10'2" x 9'5"		
BEDROOM 1	2.75m x 5.32m	9'0" x 17'5"		
BEDROOM 2	2.75m x 4.68m	9'0" x 15'4"		

APARTMENT 172				2 BED
LIVING/DINING	4.49m x 6.76m	14'9" x 22'2"		
KITCHEN	3.26m x 2.50m	10'8" x 8'2"		
BEDROOM 1	2.80m x 5.02m	9'2" x 16'6"		
BEDROOM 2	2.84m x 4.77m	9'4" x 15'8"		

APARTMENT 173				1 BED
LIVING/DINING	3.22m x 6.00m	10'7" x 19'8"		
KITCHEN	3.22m x 2.50m	10'7" x 8'2"		
BEDROOM 1	3.10m x 3.71m	10'2" x 12'2"		

APARTMENT 174				2 BED
LIVING/DINING	3.83m x 5.71m	12'7" x 18'9"		
KITCHEN	2.73m x 2.50m	9'0" x 8'2"		
BEDROOM 1	4.19m* x 4.43m*	13'9"* x 14'6"*		
BEDROOM 2	2.86m x 3.80m	9'5" x 12'6"		

- Double switched sockets

Energy efficient downlighter

Pendant light

Energy efficient twin adjustable spotlights
- Speaker

External downlighter

Balcony light

Entry phone
- Telephone point

TV aerial

Master control unit (2 x Double switched sockets, SAT, SKY plus+ HD TV, FM, TV return, BT point)

TM
- Towel rail

Heated wall

Privacy screen

Strip light

Solid ventilation panel
- Washer/Dryer

Fridge/Freezer

Tall unit (may include appliance subject to design)
- Dishwasher

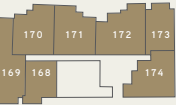
Wine fridge

Coffered ceiling

Floorplans shown are for approximate measurements only. Exact layout and sizes may vary. All measurements may vary within a tolerance of 5%. *Denotes maximum measurements.



ELEVATION



FLOORPLAN



MASTERPLAN



Second Floor

MONTPELLIER HOUSE

APARTMENT 175			2 BED			APARTMENT 182			2 BED		
LIVING/DINING	3.25m x 6.62m	10'8" x 21'9"				LIVING/DINING	6.94m x 3.25m	22'9" x 10'8"			
KITCHEN	3.38m x 2.93m	11'1" x 9'7"				KITCHEN	3.05m x 3.09m	10'0" x 10'2"			
BEDROOM 1	3.37m x 2.79m	11'1" x 9'2"				BEDROOM 1	4.55m x 2.77m	15'0" x 9'1"			
BEDROOM 2	3.72m x 2.71m	12'2" x 9'0"				BEDROOM 2	3.60m x 2.73m	11'10" x 9'0"			

- Double switched sockets

Energy efficient downlighter

Pendant light

Energy efficient twin adjustable spotlights
- Speaker

External downlighter

Balcony light

Entry phone
- Telephone point

TV aerial

Master control unit (2 x Double switched sockets, SAT, SKY plus+ HD TV, FM, TV return, BT point)

Towel rail

Heated wall

Privacy screen

Strip light

Solid ventilation panel
- Washer/Dryer

Fridge/Freezer

Tall unit (may include appliance subject to design)

Dishwasher

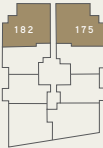
Wine fridge

Coffered ceiling

Floorplans shown are for approximate measurements only. Exact layout and sizes may vary. All measurements may vary within a tolerance of 5%. *Denotes maximum measurements.



ELEVATION



FLOORPLAN



MASTERPLAN



Third Floor

MONTPELLIER HOUSE

APARTMENT 183				2 BED
LIVING/DINING	3.20m x 6.19m	10'6" x 20'4"		
KITCHEN	2.98m x 1.84m	9'9" x 6'0"		
BEDROOM 1	5.06m x 3.67m	16'7" x 12'0"		
BEDROOM 2	2.69m x 2.93m	8'10" x 9'7"		

APARTMENT 184				1 BED
LIVING/DINING	3.73m x 4.78m	12'3" x 15'8"		
KITCHEN	2.30m x 2.64m	7'7" x 8'8"		
BEDROOM 1	2.73m x 4.83m*	9'0" x 15'10"*		

APARTMENT 185				2 BED
LIVING/DINING	3.62m x 5.69m	12'0" x 18'8"		
KITCHEN	2.15m x 3.07m	7'1" x 10'1"		
BEDROOM 1	3.14m x 3.30m	10'4' x 10'10"		
BEDROOM 2	2.50m x 4.36m	8'2" x 14'4"		

APARTMENT 186				2 BED
LIVING/DINING	3.20m x 6.08m	10'6" x 20'0"		
KITCHEN	3.08m x 2.85m	10'1" x 9'4"		
BEDROOM 1	2.75m x 5.90m	9'0" x 19'4"		
BEDROOM 2	2.75m x 4.41m	9'0" x 14'6"		

APARTMENT 187				2 BED
LIVING/DINING	3.20m x 6.04m	10'6" x 19'10"		
KITCHEN	3.10m x 2.87m	10'2" x 9'5"		
BEDROOM 1	2.75m x 5.32m	9'0" x 17'5"		
BEDROOM 2	2.75m x 4.68m	9'0" x 15'4"		

APARTMENT 188				2 BED
LIVING/DINING	4.49m x 6.76m	14'9" x 22'2"		
KITCHEN	3.26m x 2.50m	10'8" x 8'2"		
BEDROOM 1	2.80m x 5.02m	9'2" x 16'6"		
BEDROOM 2	2.84m x 4.77m	9'4" x 15'8"		

APARTMENT 189				1 BED
LIVING/DINING	3.22m x 6.00m	10'7" x 19'8"		
KITCHEN	3.22m x 2.50m	10'7" x 8'2"		
BEDROOM 1	3.10m x 3.71m	10'2" x 12'2"		

APARTMENT 190				2 BED
LIVING/DINING	3.83m x 5.71m	12'7" x 18'9"		
KITCHEN	2.73m x 2.50m	9'0" x 8'2"		
BEDROOM 1	4.19m* x 4.43m*	13'9"* x 14'6"*		
BEDROOM 2	2.86m x 3.80m	9'5" x 12'6"		

- Double switched sockets

Energy efficient downlighter

Pendant light

Energy efficient twin adjustable spotlights
- Speaker

External downlighter

Balcony light

Entry phone
- Telephone point

TV aerial

Master control unit (2 x Double switched sockets, SAT, SKY plus+ HD TV, FM, TV return, BT point)

TM
- Towel rail

Heated wall

Privacy screen

Strip light

Solid ventilation panel
- Washer/Dryer

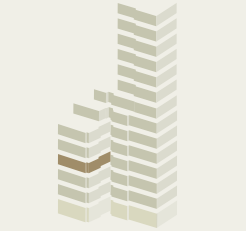
Fridge/Freezer

Tall unit (may include appliance subject to design)
- Dishwasher

Wine fridge

Coffered ceiling

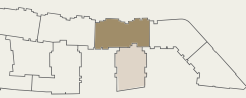
Floorplans shown are for approximate measurements only. Exact layout and sizes may vary. All measurements may vary within a tolerance of 5%. *Denotes maximum measurements.



ELEVATION



FLOORPLAN



MASTERPLAN



Third Floor

MONTPELLIER HOUSE

APARTMENT 191	2 BED		
LIVING/DINING	3.25m x 6.62m	10'8" x 21'9"	
KITCHEN	3.38m x 2.93m	11'1" x 9'7"	
BEDROOM 1	3.37m x 2.79m	11'1" x 9'2"	
BEDROOM 2	3.72m x 2.71m	12'2" x 9'0"	

APARTMENT 198	2 BED		
LIVING/DINING	6.90m x 3.25m	22'8" x 10'8"	
KITCHEN	3.11m x 2.51m	10'2" x 8'3"	
BEDROOM 1	4.11m x 2.77m	13'6" x 9'1"	
BEDROOM 2	3.60m x 2.71m	11'10" x 9'0"	

- Double switched sockets

Energy efficient downlighter

Pendant light

Energy efficient twin adjustable spotlights
- Speaker

External downlighter

Balcony light

Entry phone
- Telephone point

TV aerial

Master control unit (2 x Double switched sockets, SAT, SKY plus+ HD TV, FM, TV return, BT point)

Towel rail

Heated wall

Privacy screen

Strip light

Solid ventilation panel
- Washer/Dryer

Fridge/Freezer

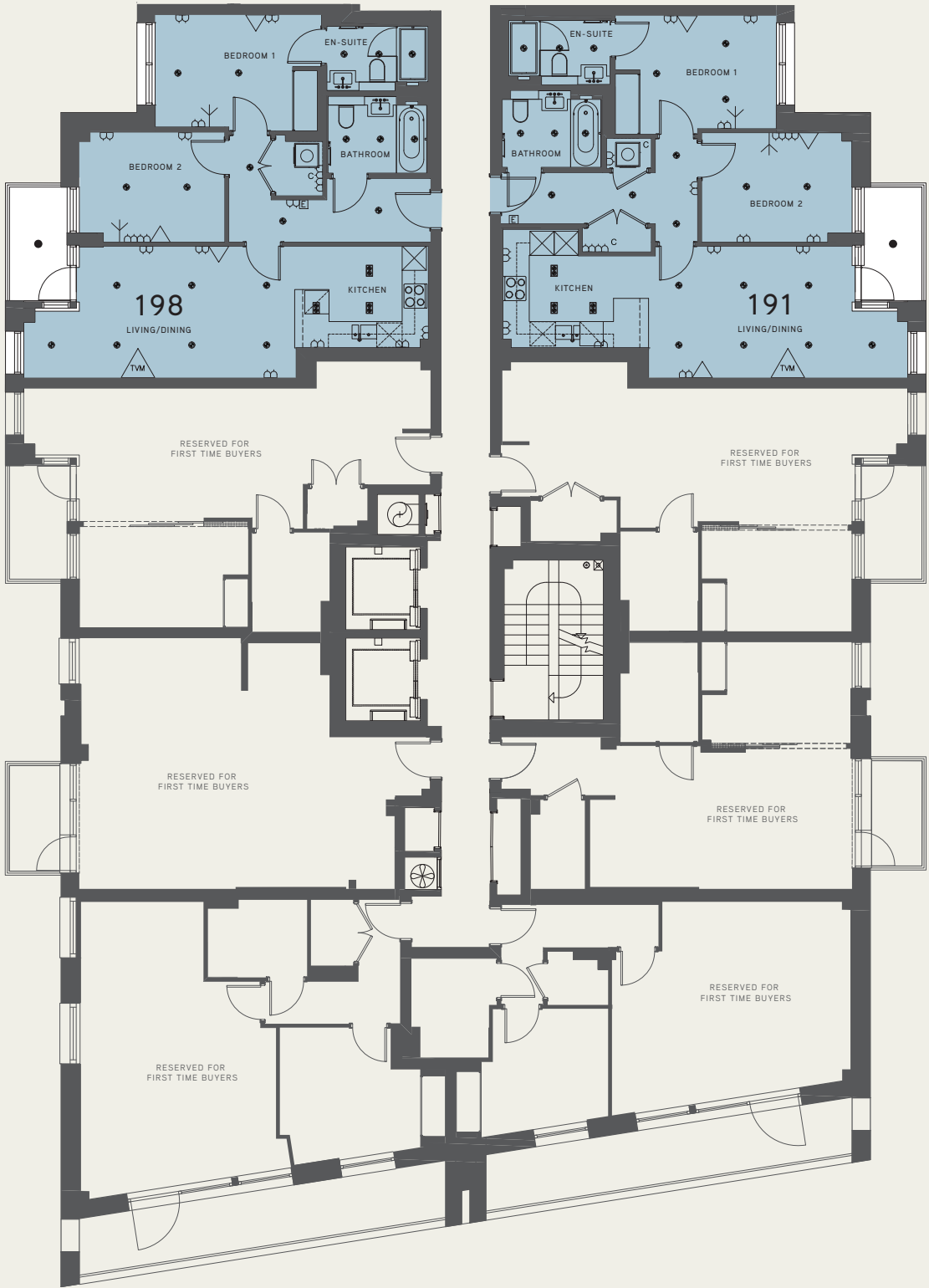
Tall unit (may include appliance subject to design)

Dishwasher

Wine fridge

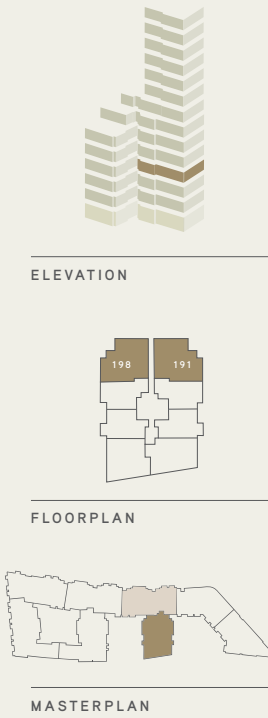
Coffered ceiling

Floorplans shown are for approximate measurements only. Exact layout and sizes may vary. All measurements may vary within a tolerance of 5%. *Denotes maximum measurements.



VIEW WEST

VIEW EAST



Fourth Floor

MONTPELLIER HOUSE

APARTMENT 199		2 BED	
LIVING/DINING	3.20m x 6.19m	10'6" x 20'4"	
KITCHEN	2.98m x 1.84m	9'9" x 6'0"	
BEDROOM 1	5.06m x 3.67m	16'7" x 12'0"	
BEDROOM 2	2.69m x 2.93m	8'10" x 9'7"	

APARTMENT 200		1 BED	
LIVING/DINING	3.73m x 4.78m	12'3" x 15'8"	
KITCHEN	2.30m x 2.64m	7'7" x 8'8"	
BEDROOM 1	2.73m x 4.83m*	9'0" x 15'10"*	

APARTMENT 201		2 BED	
LIVING/DINING	3.62m x 4.85m	12'0" x 16'0"	
KITCHEN	2.86m x 2.50m	9'5" x 8'2"	
BEDROOM 1	3.04m x 3.08m	10'0" x 10'1"	
BEDROOM 2	2.50m x 4.96m	8'2" x 16'3"	

APARTMENT 202		2 BED	
LIVING/DINING	3.20m x 6.08m	10'6" x 20'0"	
KITCHEN	3.08m x 2.85m	10'1" x 9'4"	
BEDROOM 1	2.75m x 5.90m	9'0" x 19'4"	
BEDROOM 2	2.75m x 4.41m	9'0" x 14'6"	

APARTMENT 203		2 BED	
LIVING/DINING	3.20m x 6.04m	10'6" x 19'10"	
KITCHEN	2.67m x 2.87m	8'9" x 9'5"	
BEDROOM 1	2.75m x 6.26m*	9'0" x 20'6"*	
BEDROOM 2	2.75m x 3.92m	9'0" x 12'10"	

APARTMENT 204		2 BED	
LIVING/DINING	4.51m x 6.61m	14'9" x 21'8"	
KITCHEN	3.13m x 2.66m	10'3" x 8'9"	
BEDROOM 1	3.26m x 3.43m	10'8" x 11'3"	
BEDROOM 2	2.82m x 3.63m	9'3" x 12'0"	

APARTMENT 205		1 BED	
LIVING/DINING	3.22m x 6.00m	10'7" x 19'8"	
KITCHEN	3.22m x 2.50m	10'7" x 8'2"	
BEDROOM 1	3.10m x 3.71m	10'2" x 12'2"	

APARTMENT 206		2 BED	
LIVING/DINING	3.83m x 5.71m	12'7" x 18'9"	
KITCHEN	2.73m x 2.50m	9'0" x 8'2"	
BEDROOM 1	4.19m* x 4.43m*	13'9"* x 14'6"*	
BEDROOM 2	2.86m x 3.80m	9'5" x 12'6"	

- Double switched sockets

Energy efficient downlighter

Pendant light

Energy efficient twin adjustable spotlights
- Speaker

External downlighter

Balcony light

Entry phone
- Telephone point

TV aerial

Master control unit (2 x Double switched sockets, SAT, SKY plus+ HD TV, FM, TV return, BT point)

TM
- Towel rail

Heated wall

Privacy screen

Strip light

Solid ventilation panel
- Washer/Dryer

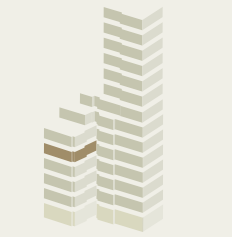
Fridge/Freezer

Tall unit (may include appliance subject to design)
- Dishwasher

Wine fridge

Coffered ceiling

Floorplans shown are for approximate measurements only. Exact layout and sizes may vary. All measurements may vary within a tolerance of 5%. *Denotes maximum measurements.



ELEVATION



FLOORPLAN



MASTERPLAN



Fourth Floor

MONTPELLIER HOUSE

APARTMENT 207 2 BED

LIVING/DINING	3.25m x 6.62m	10'8" x 21'9"
KITCHEN	3.38m x 2.93m	11'1" x 9'7"
BEDROOM 1	3.37m x 2.79m	11'1" x 9'2"
BEDROOM 2	3.72m x 2.71m	12'2" x 9'0"

APARTMENT 208 2 BED

LIVING/DINING	6.93m x 3.25m	22'9" x 10'8"
KITCHEN	3.07m x 3.33m	10'1" x 11'0"
BEDROOM 1	4.54m x 2.76m	15'0" x 9'1"
BEDROOM 2	4.58m x 2.50m	15'0" x 8'2"

APARTMENT 209 2 BED

LIVING/DINING	3.85m x 4.68m	12'8" x 15'4"
KITCHEN	3.35m x 2.50m	11'0" x 8'2"
BEDROOM 1	2.75m x 4.08m	9'0" x 13'5"
BEDROOM 2	2.56m x 3.93m	8'5" x 13'0"

APARTMENT 210 2 BED

LIVING/DINING	5.19m x 4.74m	17'0" x 15'7"
KITCHEN	2.50m x 2.99m	8'2" x 9'10"
BEDROOM 1	3.22m x 3.36m	10'7" x 11'0"
BEDROOM 2	3.60m x 2.50m	11'10" x 8'2"

APARTMENT 211 2 BED

LIVING/DINING	7.22m* x 3.25m	23'8"* x 10'8"
KITCHEN	2.79m x 3.03m	9'2" x 10'0"
BEDROOM 1	2.96m x 2.75m	9'9" x 9'0"
BEDROOM 2	3.85m x 2.56m	12'8" x 8'5"

APARTMENT 212 2 BED

LIVING/DINING	6.90m x 3.25m	22'8" x 10'8"
KITCHEN	3.11m x 2.51m	10'2" x 8'3"
BEDROOM 1	4.11m x 2.77m	13'6" x 9'1"
BEDROOM 2	3.60m x 2.71m	11'10" x 9'0"

- Double switched sockets

Energy efficient downlighter

Pendant light

Energy efficient twin adjustable spotlights
- Speaker

External downlighter

Balcony light

Entry phone
- Telephone point

TV aerial

Master control unit (2 x Double switched sockets, SAT, SKY plus+ HD TV, FM, TV return, BT point)

Towel rail
- Heated wall

Privacy screen

Strip light

Solid ventilation panel
- Washer/Dryer

Fridge/Freezer

Tall unit (may include appliance subject to design)
- Dishwasher

Wine fridge

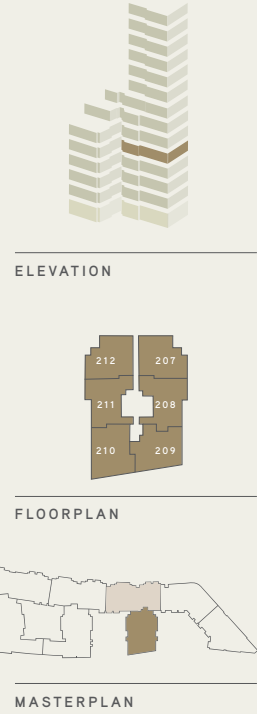
Coffered ceiling

Floorplans shown are for approximate measurements only. Exact layout and sizes may vary. All measurements may vary within a tolerance of 5%. *Denotes maximum measurements.

VIEW WEST

VIEW EAST

VIEW SOUTH



Fifth Floor

MONTPELLIER HOUSE

APARTMENT 213 2 BED

LIVING/DINING	3.20m x 6.19m	10'6" x 20'4"
KITCHEN	2.98m x 1.84m	9'9" x 6'0"
BEDROOM 1	5.06m x 3.67m	16'7" x 12'0"
BEDROOM 2	2.69m x 2.93m	8'10" x 9'7"

APARTMENT 214 1 BED

LIVING/DINING	3.73m x 4.78m	12'3" x 15'8"
KITCHEN	2.30m x 2.64m	7'7" x 8'8"
BEDROOM 1	2.73m x 4.83m*	9'0" x 15'10"

APARTMENT 215 2 BED

LIVING/DINING	3.62m x 4.85m	12'0" x 16'0"
KITCHEN	2.86m x 2.50m	9'5" x 8'2"
BEDROOM 1	3.04m x 3.08m	10'0" x 10'1"
BEDROOM 2	2.50m x 4.96m	8'2" x 16'3"

APARTMENT 216 ELITE 3 BED

LIVING/DINING	7.06m x 6.75m	23'2" x 22'2"
KITCHEN	4.03m x 2.62m	13'3" x 8'7"
BEDROOM 1	4.85m x 4.16m	16'0" x 13'8"
BEDROOM 2	2.75m x 3.12m	9'0" x 10'3"
BEDROOM 3	2.50m x 3.25m	8'2" x 10'8"

APARTMENT 217 ELITE 3 BED

LIVING/DINING	8.50m x 6.31m	28'0" x 20'8"
KITCHEN	2.61m x 3.39m	8'7" x 11'1"
BEDROOM 1	3.94m x 3.64m	13'0" x 12'0"
BEDROOM 2	2.81m x 5.21m	9'3" x 17'1"
BEDROOM 3	3.70m x 3.95m	12'2" x 13'0"

APARTMENT 218 2 BED

LIVING/DINING	3.83m x 5.71m	12'7" x 18'9"
KITCHEN	2.73m x 2.50m	9'0" x 8'2"
BEDROOM 1	4.19m* x 4.43m*	13'9"* x 14'6"*
BEDROOM 2	2.86m x 3.80m	9'5" x 12'6"

- Double switched sockets

Energy efficient downlighter

Pendant light

Energy efficient twin adjustable spotlights
- Speaker

External downlighter

Balcony light

Entry phone
- Telephone point

TV aerial

Master control unit (2 x Double switched sockets, SAT, SKY plus+ HD TV, FM, TV return, BT point)

TM
- Towel rail

Heated wall

Privacy screen

Strip light

Solid ventilation panel
- Washer/Dryer

Fridge/Freezer

Tall unit (may include appliance subject to design)
- Dishwasher

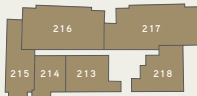
Wine fridge

Coffered ceiling

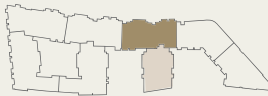
Floorplans shown are for approximate measurements only. Exact layout and sizes may vary. All measurements may vary within a tolerance of 5%. *Denotes maximum measurements.



ELEVATION



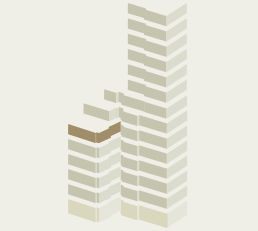
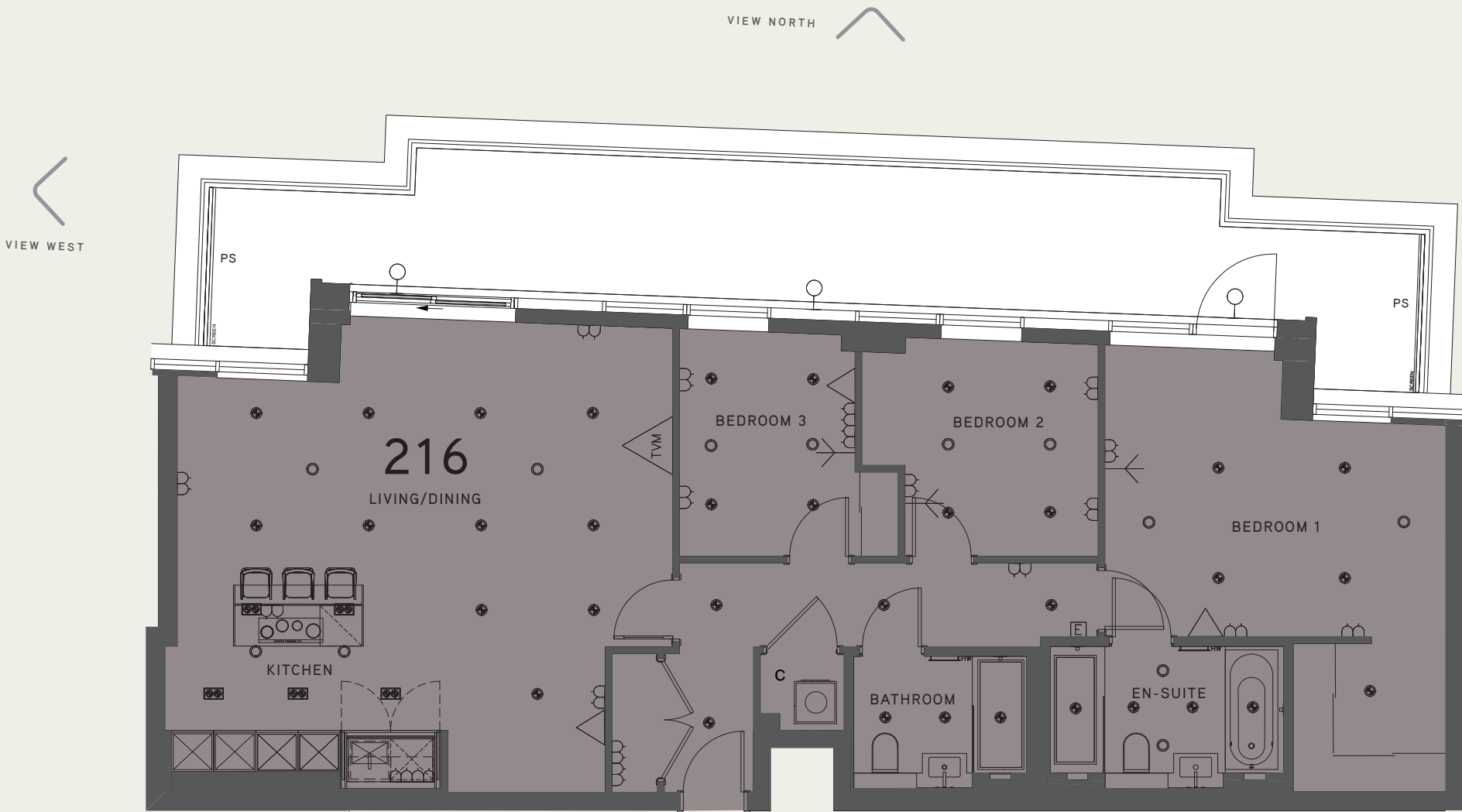
FLOORPLAN



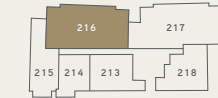
MASTERPLAN



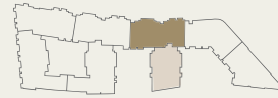
ELITE | APARTMENT 216



ELEVATION



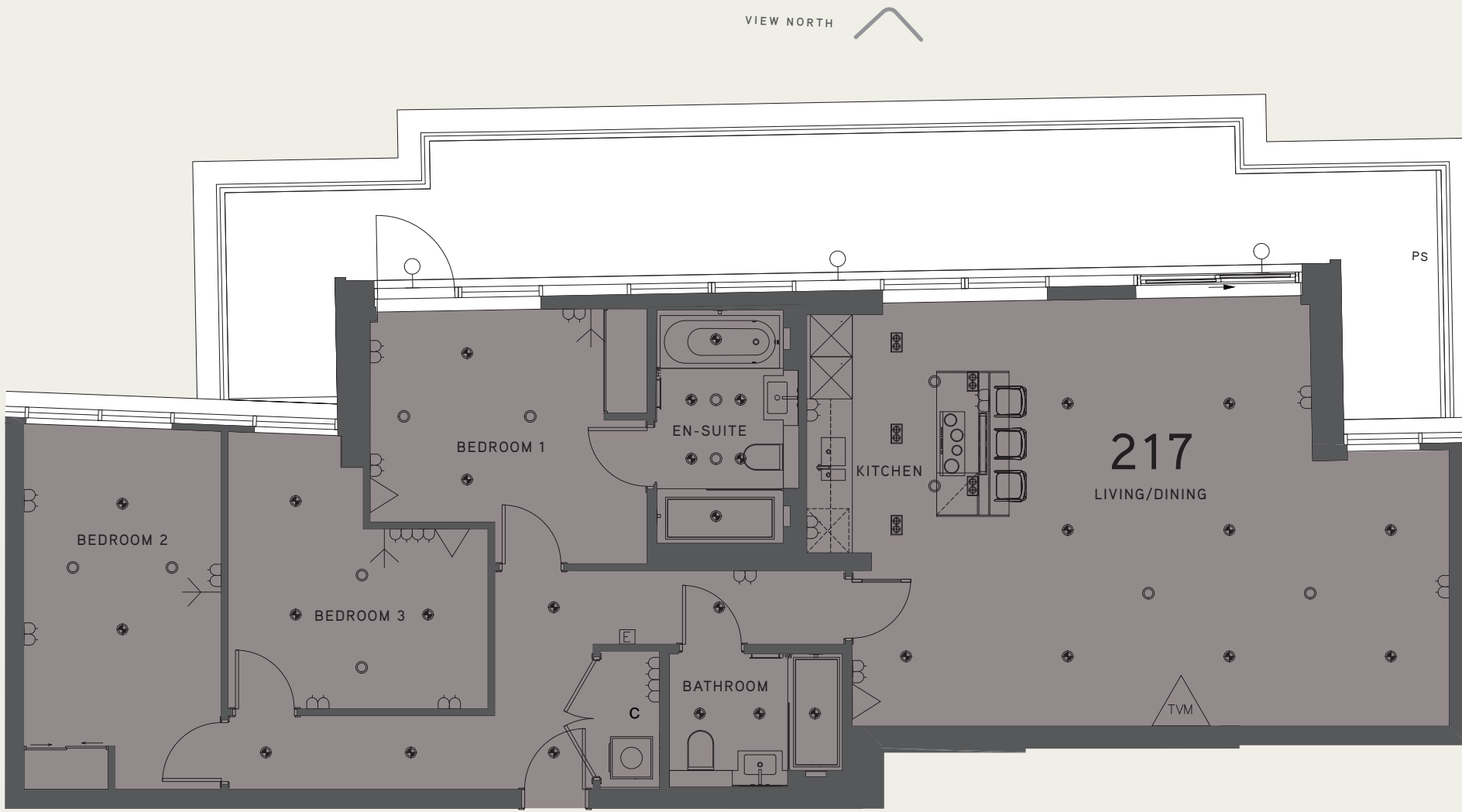
FLOORPLAN



MASTERPLAN



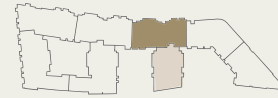
ELITE | APARTMENT 217



ELEVATION



FLOORPLAN



MASTERPLAN



Fifth Floor

MONTPELLIER HOUSE

APARTMENT 219 2 BED

LIVING/DINING	3.25m x 6.62m	10'8" x 21'9"
KITCHEN	3.38m x 2.93m	11'1" x 9'7"
BEDROOM 1	3.37m x 2.79m	11'1" x 9'2"
BEDROOM 2	3.72m x 2.71m	12'2" x 9'0"

APARTMENT 220 2 BED

LIVING/DINING	6.93m x 3.25m	22'9" x 10'8"
KITCHEN	3.07m x 3.33m	10'1" x 11'0"
BEDROOM 1	4.54m x 2.76m	15'0" x 9'1"
BEDROOM 2	4.58m x 2.50m	15'0" x 8'2"

APARTMENT 221 2 BED

LIVING/DINING	3.85m x 4.68m	12'8" x 15'4"
KITCHEN	3.35m x 2.50m	11'0" x 8'2"
BEDROOM 1	2.75m x 4.08m	9'0" x 13'5"
BEDROOM 2	2.56m x 3.93m	8'5" x 13'0"

APARTMENT 222 2 BED

LIVING/DINING	5.19m x 4.74m	17'0" x 15'7"
KITCHEN	2.50m x 2.99m	8'2" x 9'10"
BEDROOM 1	3.22m x 3.36m	10'7" x 11'0"
BEDROOM 2	3.60m x 2.50m	11'10" x 8'2"

APARTMENT 223 2 BED

LIVING/DINING	7.22m* x 3.25m	23'8"* x 10'8"
KITCHEN	2.79m x 3.03m	9'2" x 10'0"
BEDROOM 1	2.96m x 2.75m	9'9" x 9'0"
BEDROOM 2	3.85m x 2.56m	12'8" x 8'5"

APARTMENT 224 2 BED

LIVING/DINING	6.90m x 3.25m	22'8" x 10'8"
KITCHEN	3.11m x 2.51m	10'2" x 8'3"
BEDROOM 1	4.11m x 2.77m	13'6" x 9'1"
BEDROOM 2	3.60m x 2.71m	11'10" x 9'0"

- Double switched sockets

Energy efficient downlighter

Pendant light

Energy efficient twin adjustable spotlights
- Speaker

External downlighter

Balcony light

Entry phone
- Telephone point

TV aerial

Master control unit (2 x Double switched sockets, SAT, SKY plus+ HD TV, FM, TV return, BT point)

Towel rail
- Heated wall

Privacy screen

Strip light

Solid ventilation panel
- Washer/Dryer

Fridge/Freezer

Tall unit (may include appliance subject to design)
- Dishwasher

Wine fridge

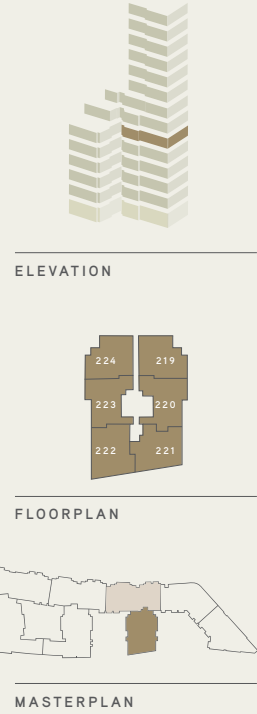
Coffered ceiling

Floorplans shown are for approximate measurements only. Exact layout and sizes may vary. All measurements may vary within a tolerance of 5%. *Denotes maximum measurements.

VIEW WEST

VIEW EAST

VIEW SOUTH



Sixth Floor

MONTPELLIER HOUSE ELITE

APARTMENT 225		ELITE 3 BED		APARTMENT 226		ELITE 3 BED	
LIVING/DINING	6.01m x 7.88m	19'9" x 25'10"		LIVING/DINING	8.68m x 5.34m	28'6"* x 17'6"	
KITCHEN	4.67m x 2.96m	15'4" x 9'9"		KITCHEN	6.61m x 2.96m	21'8" x 9'9"	
BEDROOM 1	4.02m x 3.25m	13'2" x 10'8"		BEDROOM 1	3.77m x 3.23m	12'5" x 10'7"	
BEDROOM 2	4.00m x 4.27m	13'1" x 14'0"		BEDROOM 2	3.99m x 2.93m	13'1" x 9'7"	
BEDROOM 3	4.77m x 2.75m	15'8" x 9'0"		BEDROOM 3	4.52m x 2.73m	14'10" x 9'0"	

- Double switched sockets

Energy efficient downlighter

Pendant light

Energy efficient twin adjustable spotlights
- Speaker

External downlighter

Balcony light

Entry phone
- Telephone point

TV aerial

Master control unit (2 x Double switched sockets, SAT, SKY plus+ HD TV, FM, TV return, BT point)

Towel rail

Heated wall

Privacy screen

Strip light

Solid ventilation panel
- Washer/Dryer

Fridge/Freezer

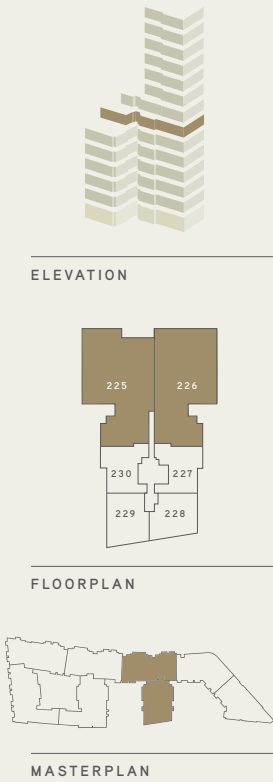
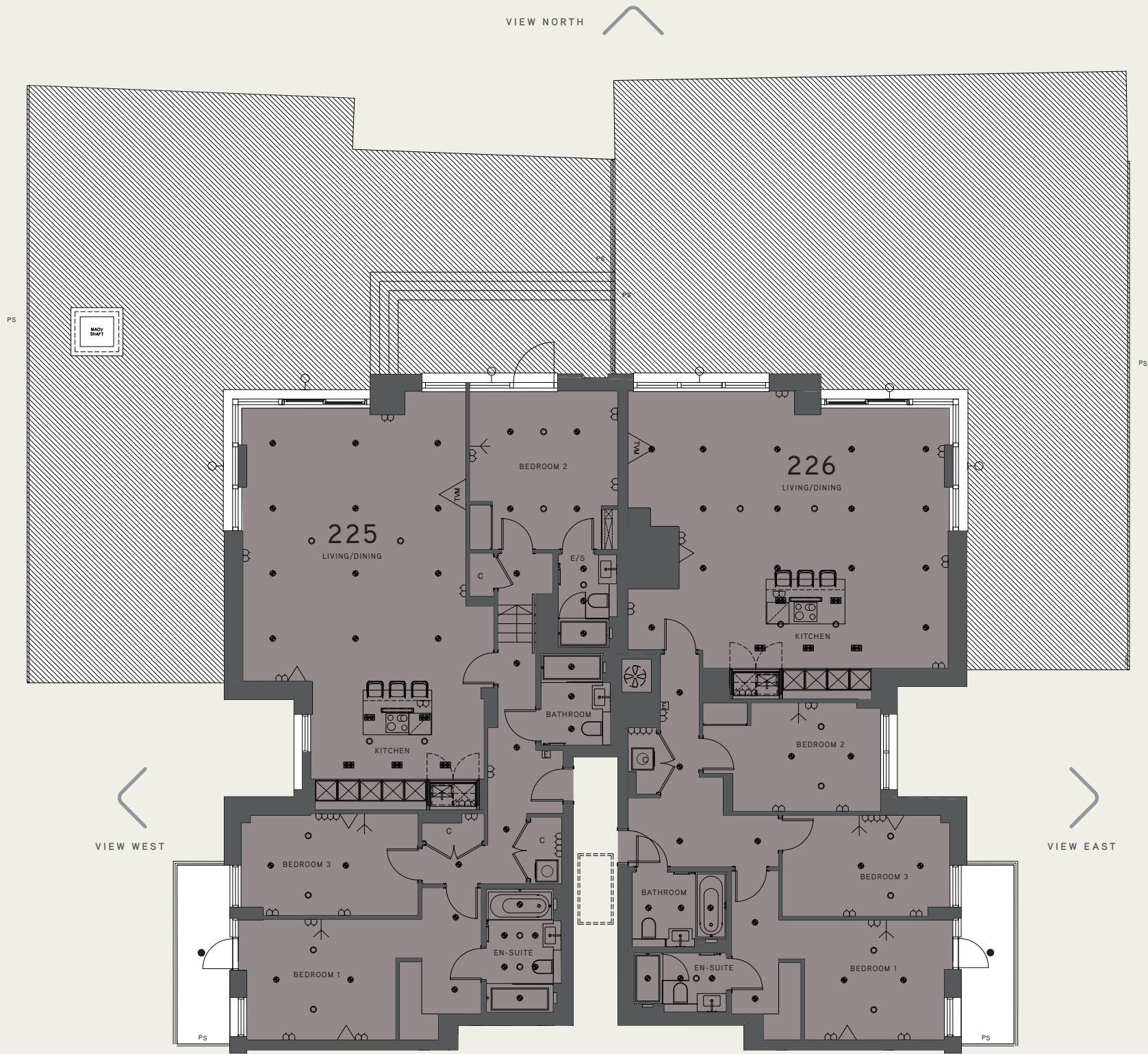
Tall unit (may include appliance subject to design)

Dishwasher

Wine fridge

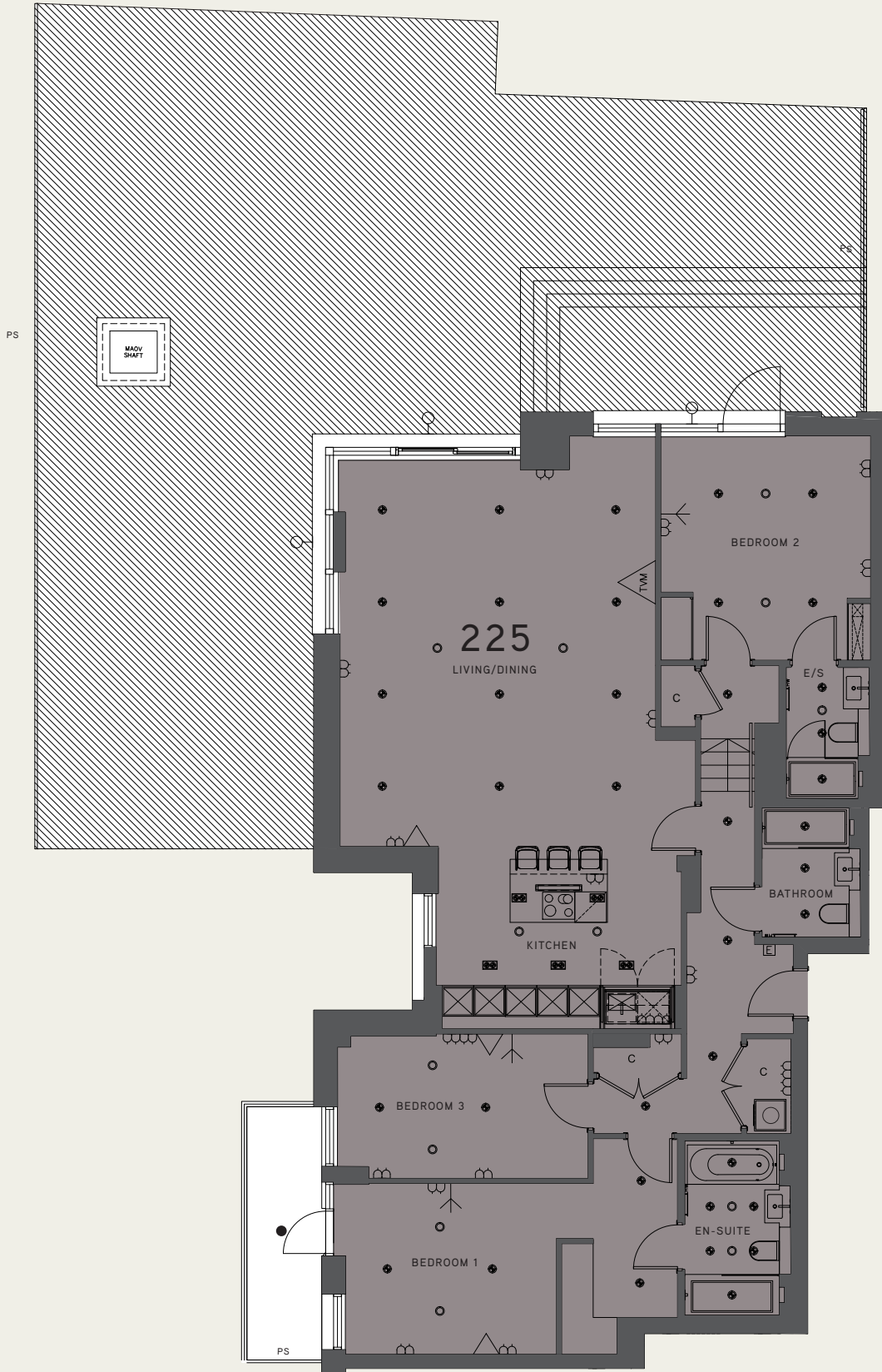
Coffered ceiling

Floorplans shown are for approximate measurements only. Exact layout and sizes may vary. All measurements may vary within a tolerance of 5%. *Denotes maximum measurements.

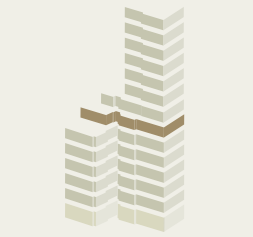


ELITE | APARTMENT 225

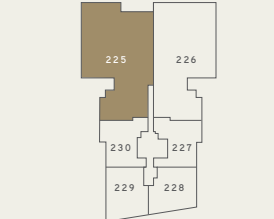
VIEW WEST



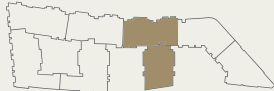
VIEW NORTH



ELEVATION



FLOORPLAN

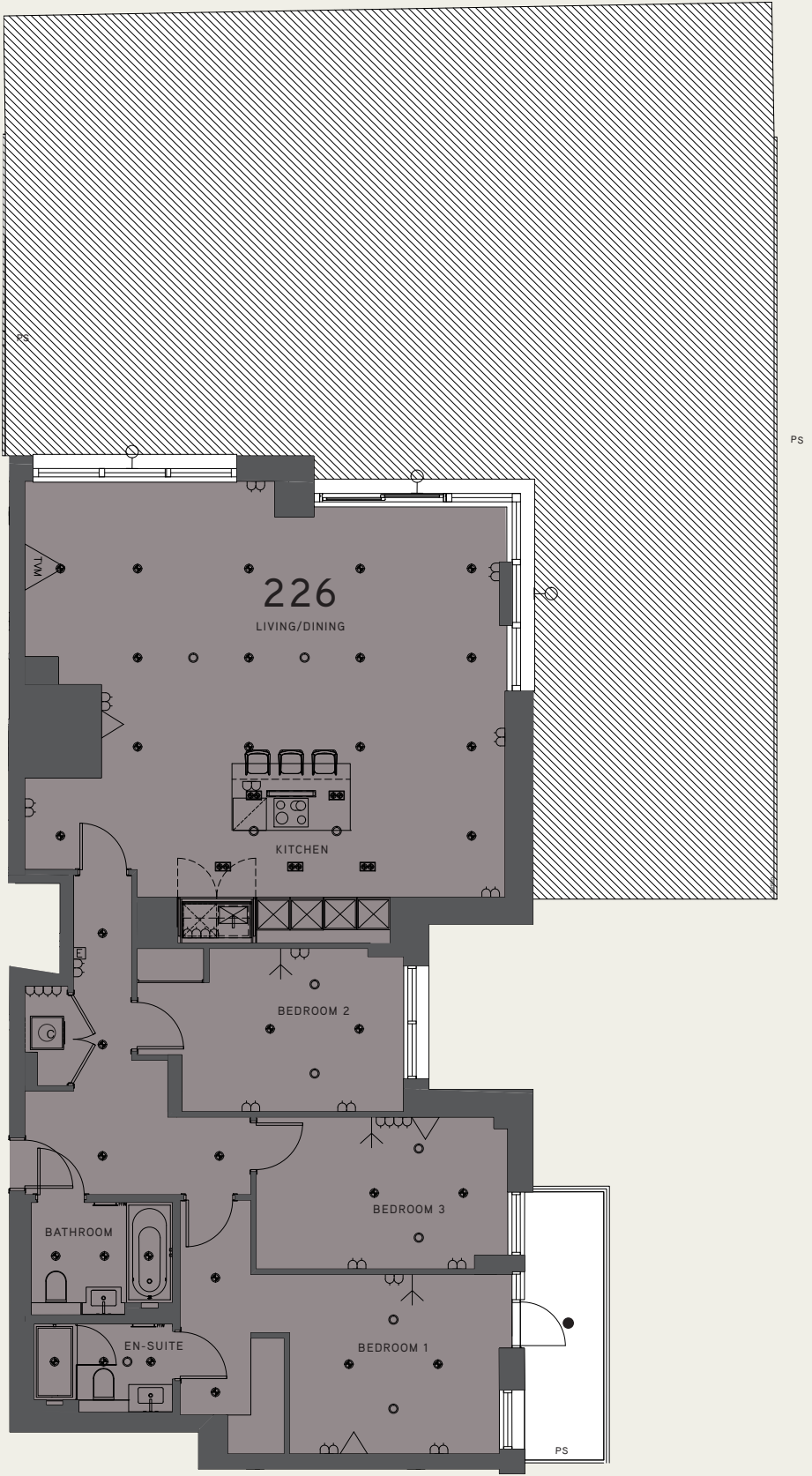


MASTERPLAN



ELITE | APARTMENT 226

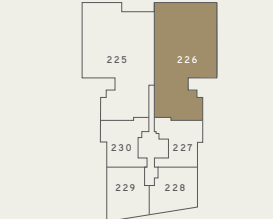
VIEW EAST



VIEW NORTH



ELEVATION



FLOORPLAN



MASTERPLAN



Sixth Floor

APARTMENT 227		2 BED	
LIVING/DINING	5.41m x 3.25m	17'9" x 10'8"	
KITCHEN	3.07m x 3.33m	10'1" x 11'0"	
BEDROOM 1	4.54m x 2.76m	15'0" x 9'1"	
BEDROOM 2	4.58m x 2.50m	15'0" x 8'2"	

APARTMENT 229		2 BED	
LIVING/DINING	5.19m x 4.74m	17'0" x 15'7"	
KITCHEN	2.50m x 2.99m	8'2" x 9'10"	
BEDROOM 1	3.22m x 3.36m	10'7" x 11'0"	
BEDROOM 2	3.60m x 2.50m	11'10" x 8'2"	

APARTMENT 228		2 BED	
LIVING/DINING	3.85m x 4.68m	12'8" x 15'4"	
KITCHEN	3.35m x 2.50m	11'0" x 8'2"	
BEDROOM 1	2.75m x 4.08m	9'0" x 13'5"	
BEDROOM 2	2.56m x 3.93m	8'5" x 13'0"	

APARTMENT 230		2 BED	
LIVING/DINING	5.69m x 3.25m	18'8" x 10'8"	
KITCHEN	2.79m x 3.03m	9'2" x 10'0"	
BEDROOM 1	2.99m x 2.75m	9'10" x 9'0"	
BEDROOM 2	3.85m x 2.56m	12'8" x 8'5"	

- Double switched sockets

Energy efficient downlighter

Pendant light

Energy efficient twin adjustable spotlights
- Speaker

External downlighter

Balcony light

Entry phone
- Telephone point

TV aerial

Master control unit (2 x Double switched sockets, SAT, SKY plus+ HD TV, FM, TV return, BT point)

TW
- Towel rail

Heated wall

Privacy screen

Strip light

Solid ventilation panel
- Washer/Dryer

Fridge/Freezer

Tall unit (may include appliance subject to design)
- Dishwasher

Wine fridge

Coffered ceiling

Floorplans shown are for approximate measurements only. Exact layout and sizes may vary. All measurements may vary within a tolerance of 5%. *Denotes maximum measurements.

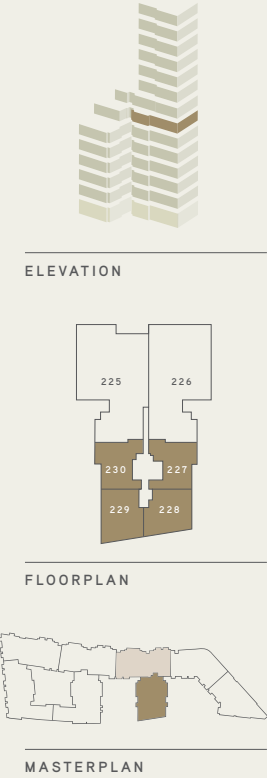
MONTPELLIER HOUSE

VIEW WEST



VIEW EAST

VIEW SOUTH



Seventh Floor

APARTMENT 231 ELITE 3 BED

LIVING/DINING	7.29m x 6.67m	24'0" x 22'0"
KITCHEN	4.34m x 2.96m	14'3" x 9'9"
BEDROOM 1	4.36m x 3.30m	14'4" x 10'10"
BEDROOM 2	3.11m x 3.69m	10'2" x 12'1"
BEDROOM 3	2.97m x 3.99m	9'9" x 13'1"

- Double switched sockets

Energy efficient downlighter

Pendant light

Energy efficient twin adjustable spotlights
- Speaker

External downlighter

Balcony light

Entry phone
- Telephone point

TV aerial

Master control unit (2 x Double switched sockets, SAT, SKY plus+ HD TV, FM, TV return, BT point)
- Towel rail

Heated wall

Privacy screen

Strip light

Solid ventilation panel
- Washer/Dryer

Fridge/Freezer

Tall unit (may include appliance subject to design)
- Dishwasher

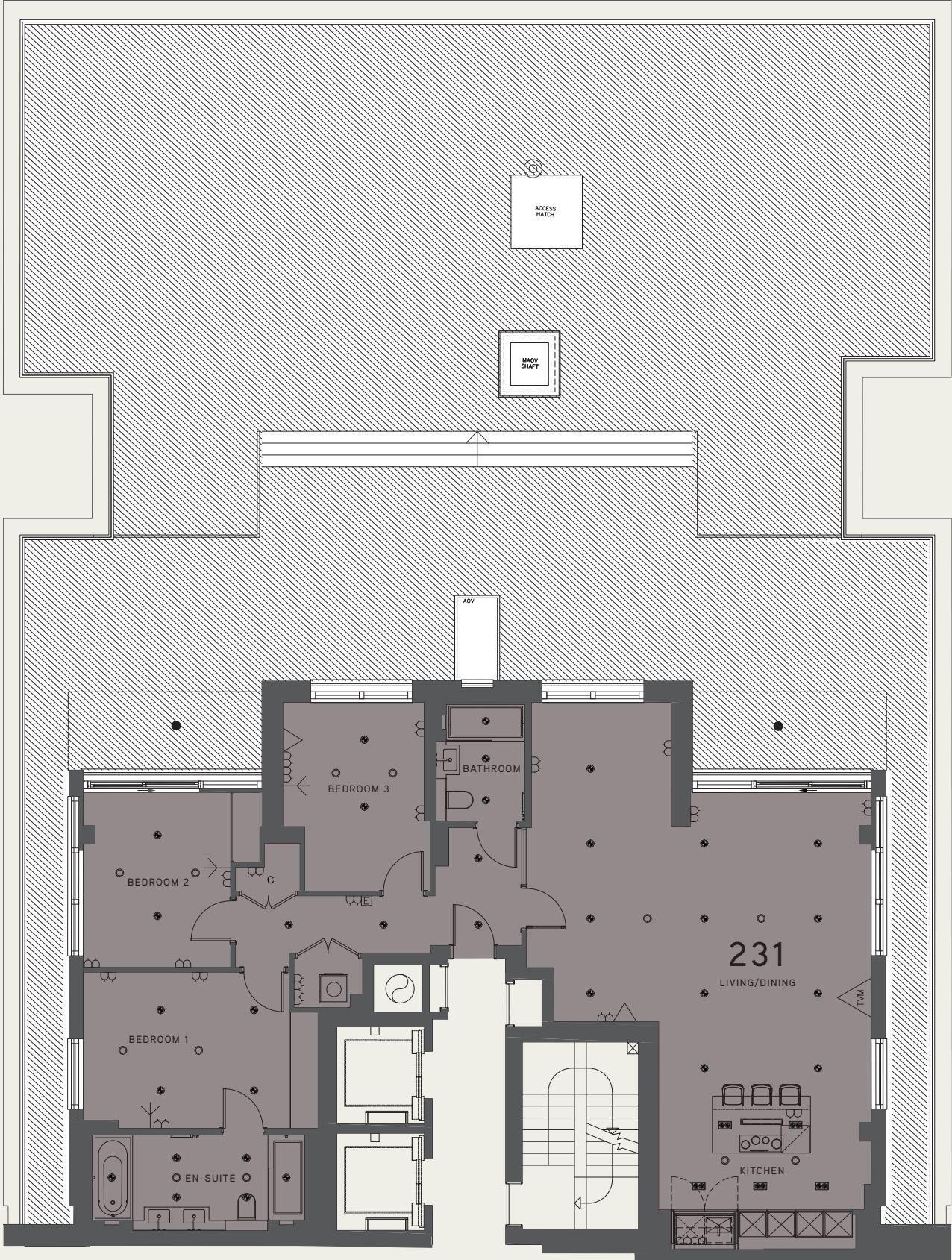
Wine fridge

Coffered ceiling

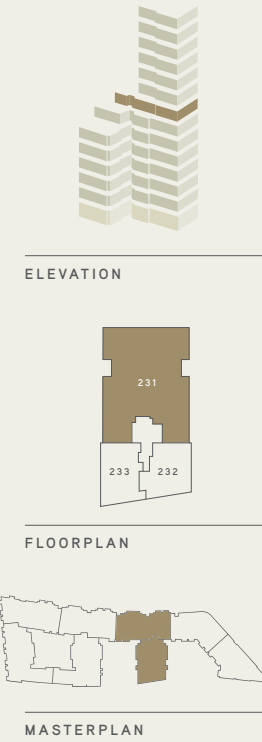
Floorplans shown are for approximate measurements only. Exact layout and sizes may vary. All measurements may vary within a tolerance of 5%. *Denotes maximum measurements.

MONTPELLIER HOUSE ELITE

VIEW NORTH
VIEW WEST



VIEW EAST



Seventh Floor

MONTPELLIER HOUSE

APARTMENT 232	2 BED		APARTMENT 233	2 BED	
LIVING/DINING	3.85m x 8.70m	12'8" x 28'7"	LIVING/DINING	5.21m x 5.84m*	17'1" x 19'2"*
KITCHEN	2.51m x 3.81m	8'3" x 12'6"	KITCHEN	2.43m x 4.36m	8'0" x 14'4"
BEDROOM 1	2.75m x 4.20m	9'0" x 13'9"	BEDROOM 1	5.62m x 2.75m	18'5" x 9'0"
BEDROOM 2	2.56m x 3.90m	8'5" x 12'10"	BEDROOM 2	3.70m x 2.75m	12'2" x 9'0"

- Double switched sockets

Energy efficient downlighter

Pendant light

Energy efficient twin adjustable spotlights
- Speaker

External downlighter

Balcony light

Entry phone
- Telephone point

TV aerial

Master control unit (2 x Double switched sockets, SAT, SKY plus+ HD TV, FM, TV return, BT point)

Towel rail

Heated wall

Privacy screen

Strip light

Solid ventilation panel
- Washer/Dryer

Fridge/Freezer

Tall unit (may include appliance subject to design)

Dishwasher

Wine fridge

Coffered ceiling

Floorplans shown are for approximate measurements only. Exact layout and sizes may vary. All measurements may vary within a tolerance of 5%. *Denotes maximum measurements.

VIEW WEST



VIEW SOUTH

VIEW EAST



ELEVATION



FLOORPLAN



MASTERPLAN



Eighth Floor

MONTPELLIER HOUSE

APARTMENT 234	ELITE 3 BED	
LIVING/DINING	7.29m x 6.67m	24'0" x 22'0"
KITCHEN	4.34m x 2.96m	14'3" x 9'9"
BEDROOM 1	4.36m x 3.30m	14'4" x 10'10"
BEDROOM 2	3.11m x 3.69m	10'2" x 12'1"
BEDROOM 3	2.97m x 3.99m	9'9" x 13'1"

APARTMENT 235	2 BED	
LIVING/DINING	3.85m x 8.70m	12'8" x 28'7"
KITCHEN	2.51m x 3.81m	8'3" x 12'6"
BEDROOM 1	2.75m x 4.20m	9'0" x 13'9"
BEDROOM 2	2.56m x 3.90m	8'5" x 12'10"

APARTMENT 236	2 BED	
LIVING/DINING	5.21m x 5.84m*	17'1" x 19'2"*
KITCHEN	2.43m x 4.36m	8'0" x 14'4"
BEDROOM 1	5.62m x 2.75m	18'5" x 9'0"
BEDROOM 2	3.70m x 2.75m	12'2" x 9'0"

- Double switched sockets

Energy efficient downlighter

Pendant light

Energy efficient twin adjustable spotlights
- Speaker

External downlighter

Balcony light

Entry phone
- Telephone point

TV aerial

Master control unit (2 x Double switched sockets, SAT, SKY plus+ HD TV, FM, TV return, BT point)

Towel rail

Heated wall

Privacy screen

Strip light

Solid ventilation panel
- Washer/Dryer

Fridge/Freezer

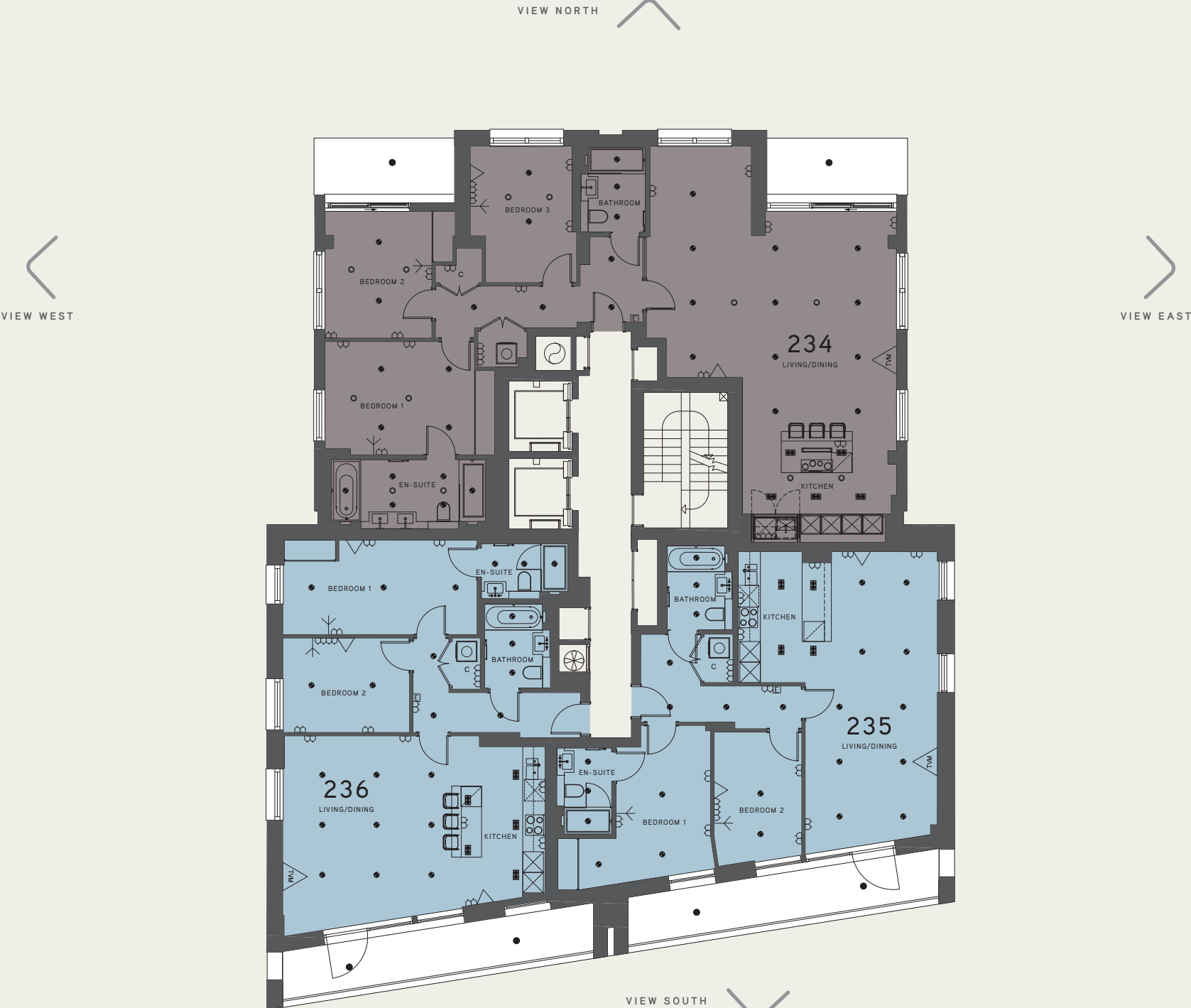
Tall unit (may include appliance subject to design)

Dishwasher

Wine fridge

Coffered ceiling

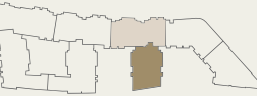
Floorplans shown are for approximate measurements only. Exact layout and sizes may vary. All measurements may vary within a tolerance of 5%. *Denotes maximum measurements.



ELEVATION



FLOORPLAN



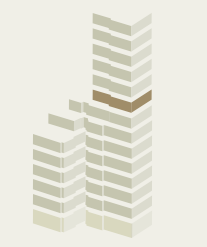
MASTERPLAN



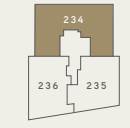


Computer generated imagery for illustrative purposes only

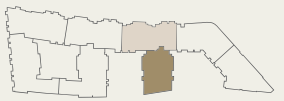
ELITE | APARTMENT 234



ELEVATION



FLOORPLAN



MASTERPLAN



Ninth Floor

MONTPELLIER HOUSE

APARTMENT 237			ELITE 3 BED
LIVING/DINING	7.29m x 6.67m	24'0" x 22'0"	
KITCHEN	4.34m x 2.96m	14'3" x 9'9"	
BEDROOM 1	4.36m x 3.30m	14'4" x 10'10"	
BEDROOM 2	3.11m x 3.69m	10'2" x 12'1"	
BEDROOM 3	2.97m x 3.99m	9'9" x 13'1"	

APARTMENT 238			2 BED
LIVING/DINING	3.85m x 8.70m	12'8" x 28'7"	
KITCHEN	2.51m x 3.81m	8'3" x 12'6"	
BEDROOM 1	2.75m x 4.20m	9'0" x 13'9"	
BEDROOM 2	2.56m x 3.90m	8'5" x 12'10"	

APARTMENT 239			2 BED
LIVING/DINING	5.21m x 5.84m*	17'1" x 19'2"*	
KITCHEN	2.43m x 4.36m	8'0" x 14'4"	
BEDROOM 1	5.62m x 2.75m	18'5" x 9'0"	
BEDROOM 2	3.70m x 2.75m	12'2" x 9'0"	

- Double switched sockets

Energy efficient downlighter

Pendant light

Energy efficient twin adjustable spotlights
- Speaker

External downlighter

Balcony light

Entry phone
- Telephone point

TV aerial

Master control unit (2 x Double switched sockets, SAT, SKY plus+ HD TV, FM, TV return, BT point)

TVM
- Towel rail

Heated wall

Privacy screen

Strip light

Solid ventilation panel
- Washer/Dryer

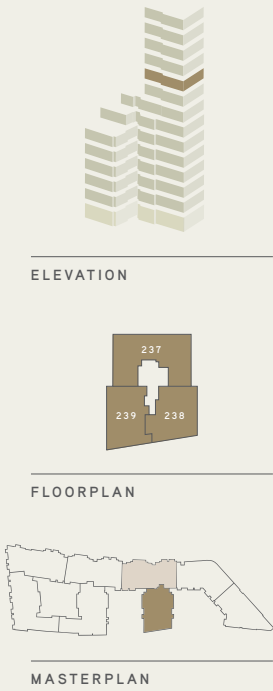
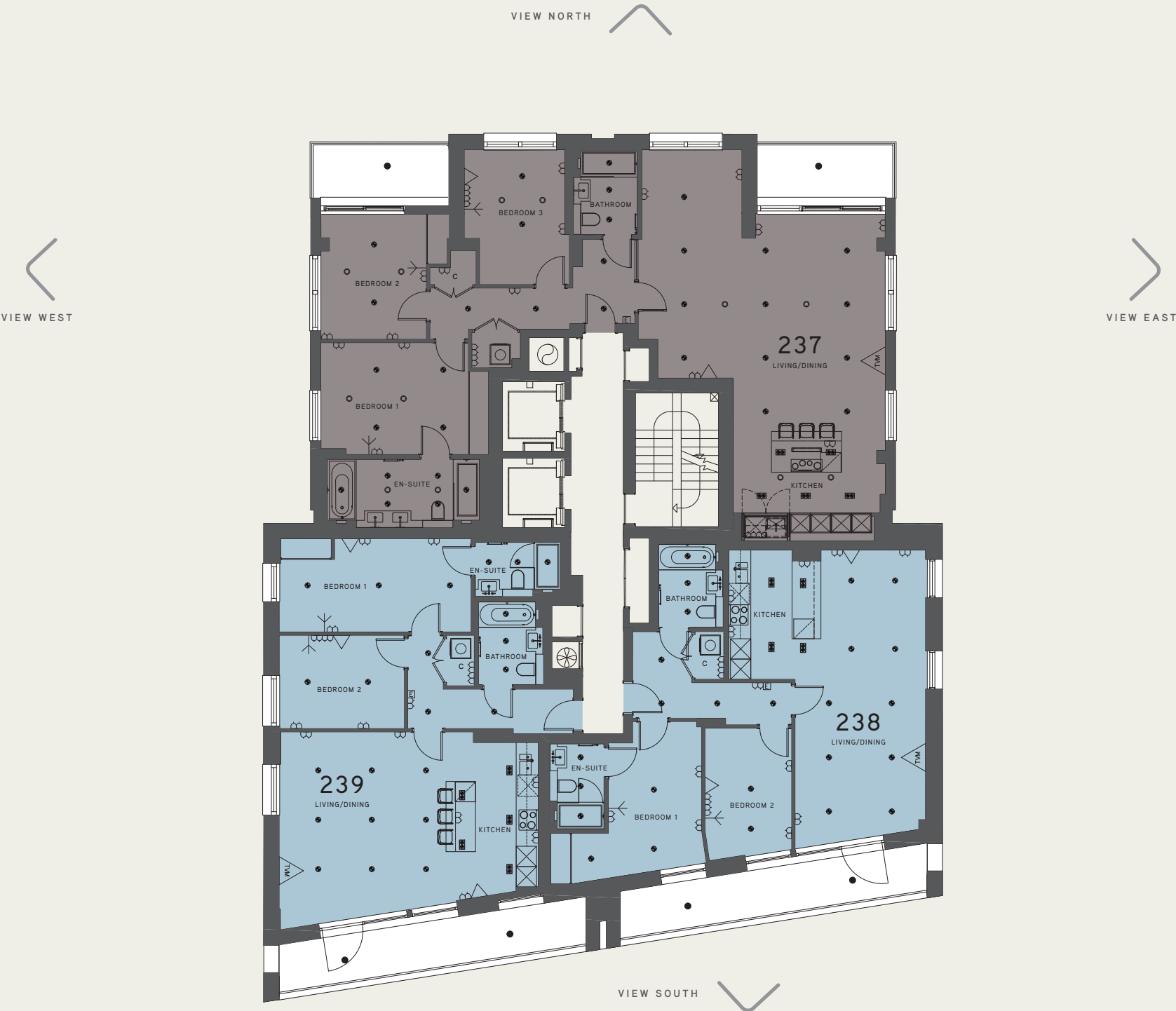
Fridge/Freezer

Tall unit (may include appliance subject to design)
- Dishwasher

Wine fridge

Coffered ceiling

Floorplans shown are for approximate measurements only. Exact layout and sizes may vary. All measurements may vary within a tolerance of 5%. *Denotes maximum measurements.





ELITE | APARTMENT 237



Tenth Floor

MONTPELLIER HOUSE

APARTMENT 240			ELITE 3 BED		
LIVING/DINING	7.29m x 6.67m	24'0" x 22'0"			
KITCHEN	4.34m x 2.96m	14'3" x 9'9"			
BEDROOM 1	4.36m x 3.30m	14'4" x 10'10"			
BEDROOM 2	3.11m x 3.69m	10'2" x 12'1"			
BEDROOM 3	2.97m x 3.99m	9'9" x 13'1"			

APARTMENT 241			2 BED		
LIVING/DINING	3.85m x 8.70m	12'8" x 28'7"			
KITCHEN	2.51m x 3.81m	8'3" x 12'6"			
BEDROOM 1	2.75m x 4.20m	9'0" x 13'9"			
BEDROOM 2	2.56m x 3.90m	8'5" x 12'10"			

APARTMENT 242			2 BED		
LIVING/DINING	5.21m x 5.84m*	17'1" x 19'2"*			
KITCHEN	2.43m x 4.36m	8'0" x 14'4"			
BEDROOM 1	5.62m x 2.75m	18'5" x 9'0"			
BEDROOM 2	3.70m x 2.75m	12'2" x 9'0"			

- Double switched sockets

Energy efficient downlighter

Pendant light

Energy efficient twin adjustable spotlights
- Speaker

External downlighter

Balcony light

Entry phone
- Telephone point

TV aerial

Master control unit (2 x Double switched sockets, SAT, SKY plus+ HD TV, FM, TV return, BT point)

TVM
- Towel rail

Heated wall

Privacy screen

Strip light

Solid ventilation panel
- Washer/Dryer

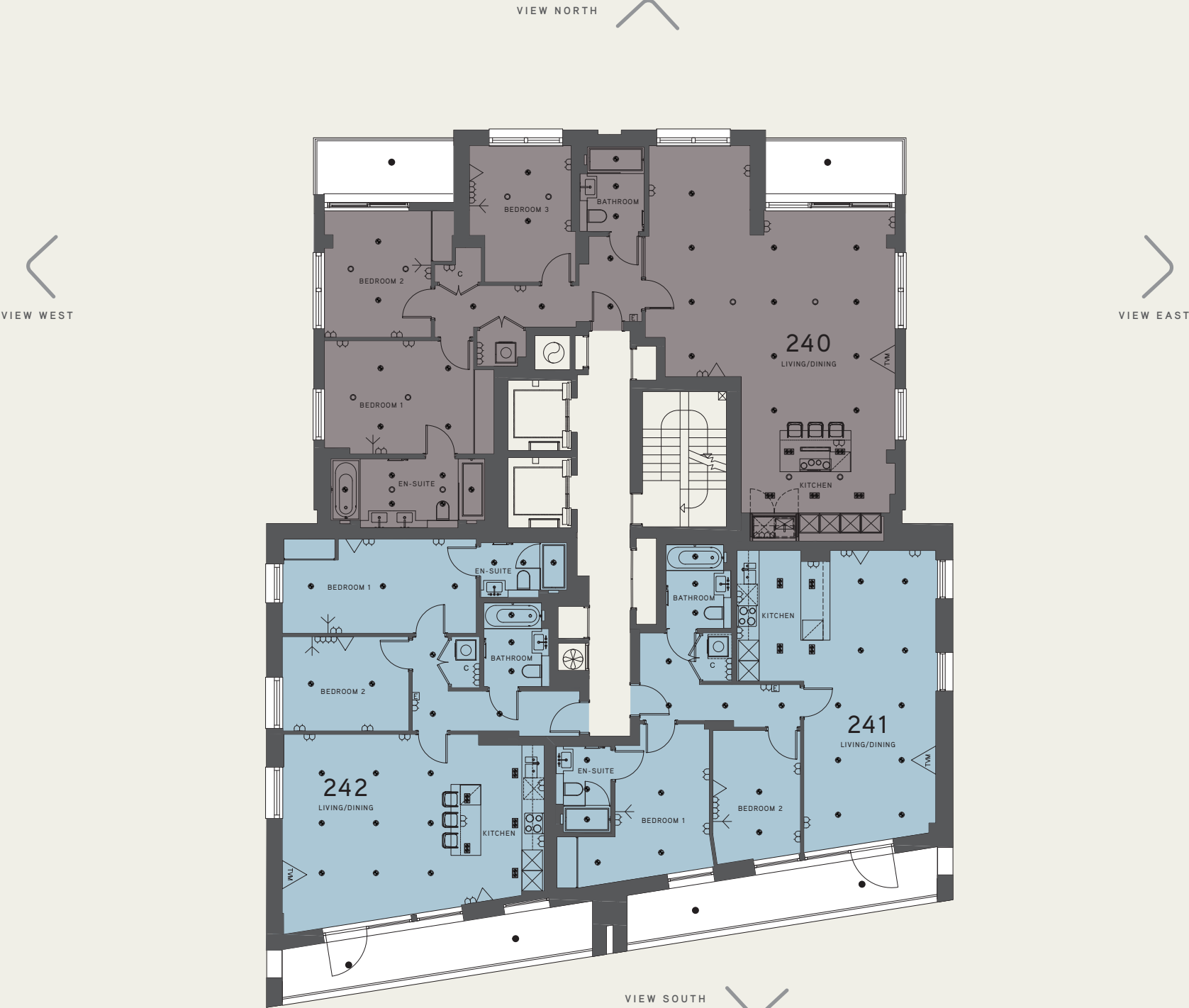
Fridge/Freezer

Tall unit (may include appliance subject to design)
- Dishwasher

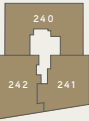
Wine fridge

Coffered ceiling

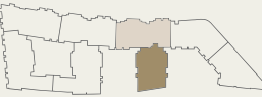
Floorplans shown are for approximate measurements only. Exact layout and sizes may vary. All measurements may vary within a tolerance of 5%. *Denotes maximum measurements.



ELEVATION



FLOORPLAN



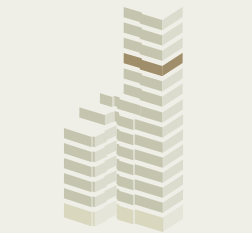
MASTERPLAN





Computer generated imagery for illustrative purposes only

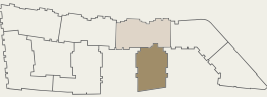
ELITE | APARTMENT 240



ELEVATION



FLOORPLAN



MASTERPLAN



Eleventh Floor

MONTPELLIER HOUSE

APARTMENT 243			ELITE 3 BED		
LIVING/DINING	7.29m x 6.67m	24'0" x 22'0"			
KITCHEN	4.34m x 2.96m	14'3" x 9'9"			
BEDROOM 1	4.36m x 3.30m	14'4" x 10'10"			
BEDROOM 2	3.11m x 3.69m	10'2" x 12'1"			
BEDROOM 3	2.97m x 3.99m	9'9" x 13'1"			

APARTMENT 244			2 BED		
LIVING/DINING	3.85m x 8.70m	12'8" x 28'7"			
KITCHEN	2.51m x 3.81m	8'3" x 12'6"			
BEDROOM 1	2.75m x 4.20m	9'0" x 13'9"			
BEDROOM 2	2.56m x 3.90m	8'5" x 12'10"			

APARTMENT 245			2 BED		
LIVING/DINING	5.21m x 5.84m*	17'1" x 19'2"*			
KITCHEN	2.43m x 4.36m	8'0" x 14'4"			
BEDROOM 1	5.62m x 2.75m	18'5" x 9'0"			
BEDROOM 2	3.70m x 2.75m	12'2" x 9'0"			

- Double switched sockets

Energy efficient downlighter

Pendant light

Energy efficient twin adjustable spotlights
- Speaker

External downlighter

Balcony light

Entry phone
- Telephone point

TV aerial

Master control unit (2 x Double switched sockets, SAT, SKY plus+ HD TV, FM, TV return, BT point)

TVM
- Towel rail

Heated wall

Privacy screen

Strip light

Solid ventilation panel
- Washer/Dryer

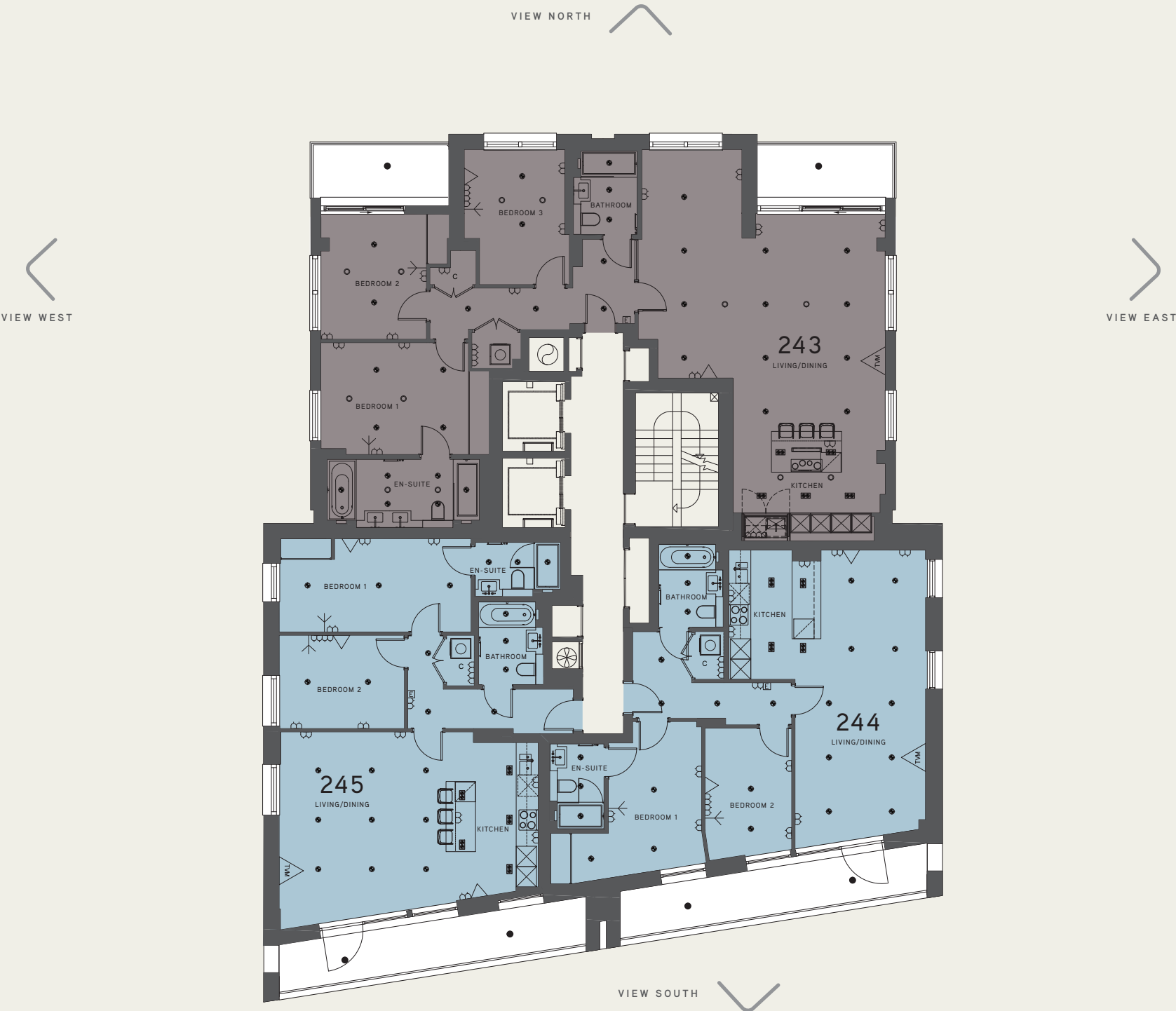
Fridge/Freezer

Tall unit (may include appliance subject to design)
- Dishwasher

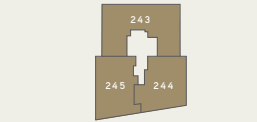
Wine fridge

Coffered ceiling

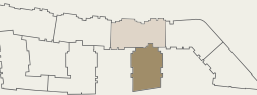
Floorplans shown are for approximate measurements only. Exact layout and sizes may vary. All measurements may vary within a tolerance of 5%. *Denotes maximum measurements.



ELEVATION



FLOORPLAN



MASTERPLAN





Computer generated imagery for illustrative purposes only

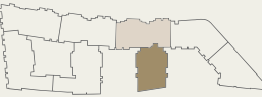
ELITE | APARTMENT 243



ELEVATION



FLOORPLAN



MASTERPLAN



Twelfth Floor

MONTPELLIER HOUSE

APARTMENT 246			ELITE 3 BED
LIVING/DINING	7.29m x 6.67m	24'0" x 22'0"	
KITCHEN	4.34m x 2.96m	14'3" x 9'9"	
BEDROOM 1	4.36m x 3.30m	14'4" x 10'10"	
BEDROOM 2	3.11m x 3.69m	10'2" x 12'1"	
BEDROOM 3	2.97m x 3.99m	9'9" x 13'1"	

APARTMENT 247			2 BED
LIVING/DINING	3.85m x 8.70m	12'8" x 28'7"	
KITCHEN	2.51m x 3.81m	8'3" x 12'6"	
BEDROOM 1	2.75m x 4.20m	9'0" x 13'9"	
BEDROOM 2	2.56m x 3.90m	8'5" x 12'10"	

APARTMENT 248			2 BED
LIVING/DINING	5.21m x 5.84m*	17'1" x 19'2"*	
KITCHEN	2.43m x 4.36m	8'0" x 14'4"	
BEDROOM 1	5.62m x 2.75m	18'5" x 9'0"	
BEDROOM 2	3.70m x 2.75m	12'2" x 9'0"	

- Double switched sockets

Energy efficient downlighter

Pendant light

Energy efficient twin adjustable spotlights
- Speaker

External downlighter

Balcony light

Entry phone
- Telephone point

TV aerial

Master control unit (2 x Double switched sockets, SAT, SKY plus+ HD TV, FM, TV return, BT point)

TVM
- Towel rail

Heated wall

Privacy screen

Strip light

Solid ventilation panel
- Washer/Dryer

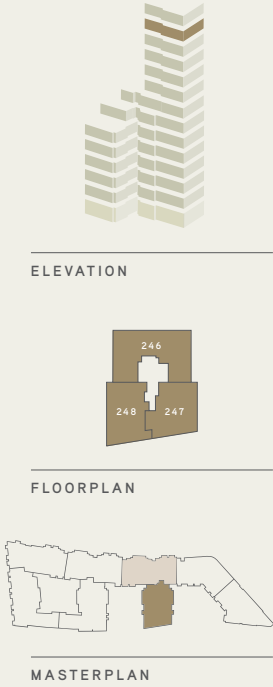
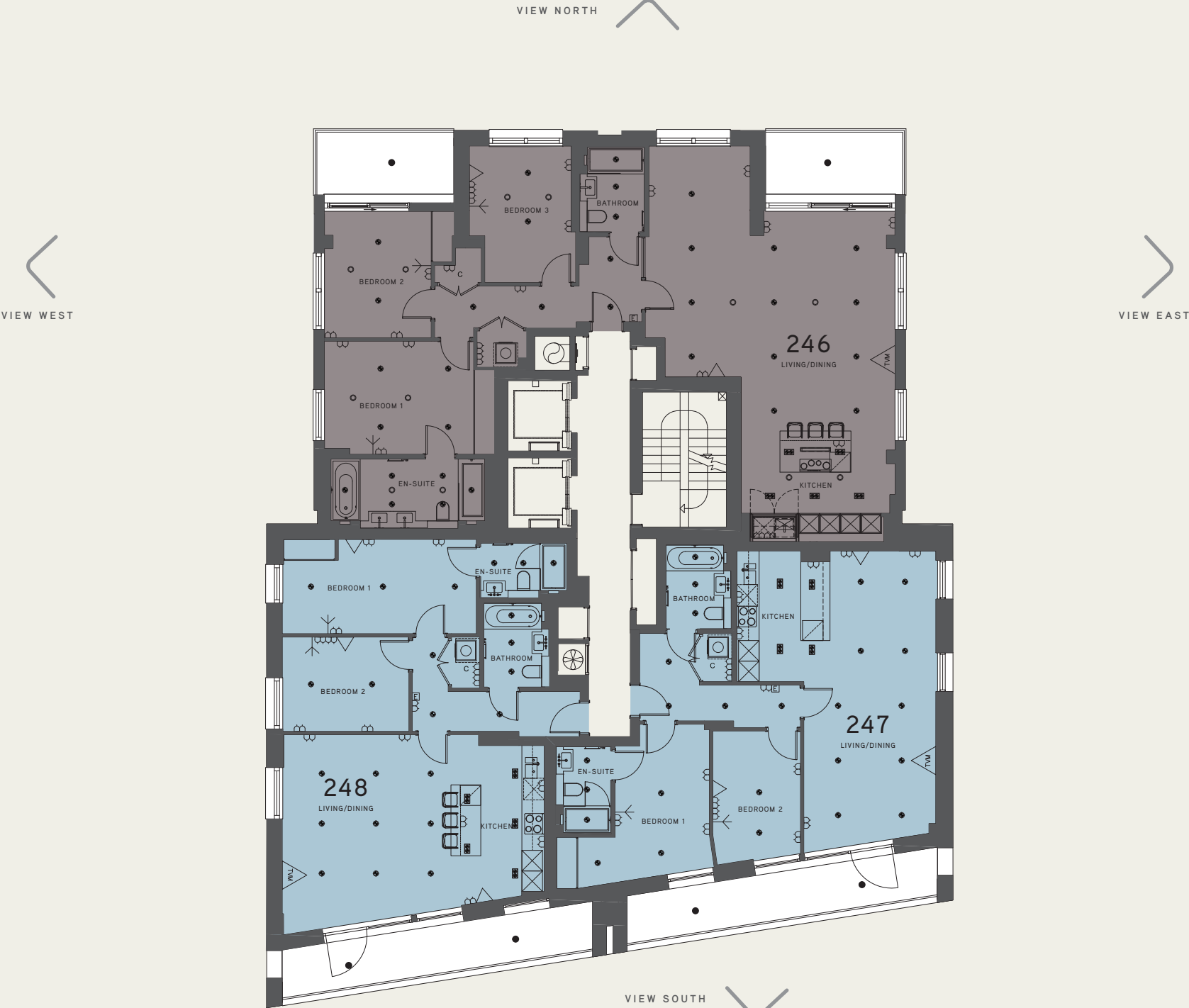
Fridge/Freezer

Tall unit (may include appliance subject to design)
- Dishwasher

Wine fridge

Coffered ceiling

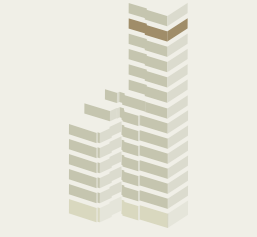
Floorplans shown are for approximate measurements only. Exact layout and sizes may vary. All measurements may vary within a tolerance of 5%. *Denotes maximum measurements.





Computer generated imagery of penthouse interior for illustrative purposes only

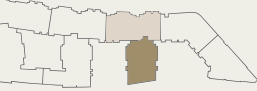
ELITE | APARTMENT 246



ELEVATION



FLOORPLAN



MASTERPLAN



Thirteenth Floor

APARTMENT 249 PENTHOUSE 3 BED

LIVING/DINING	7.89m x 12.99m	26'0" x 42'8"
KITCHEN	2.96m x 3.84m	9'9" x 12'7"
BEDROOM 1	4.15m x 5.35m	13'7" x 17'7"
BEDROOM 2	5.24m x 3.45m	17'2" x 11'4"
BEDROOM 3	2.75m x 4.11m	9'0" x 13'6"

MONTPELLIER HOUSE

- Double switched sockets

Energy efficient downlighter

Pendant light

Energy efficient twin adjustable spotlights

Speaker
- External downlighter

Balcony light

Entry phone

Telephone point

TV aerial
- Master control unit (2 x Double switched sockets, SAT, SKY plus+ HD TV, FM, TV return, BT point)

Towel rail

Heated wall
- Privacy screen

Strip light

Solid ventilation panel

Hot water cylinder
- Washer/Dryer

Fridge/Freezer

Tall unit (may include appliance subject to design)
- Dishwasher

Wine fridge

Coffered ceiling

Floorplans shown are for approximate measurements only. Exact layout and sizes may vary. All measurements may vary within a tolerance of 5%. *Denotes maximum measurements.

VIEW NORTH



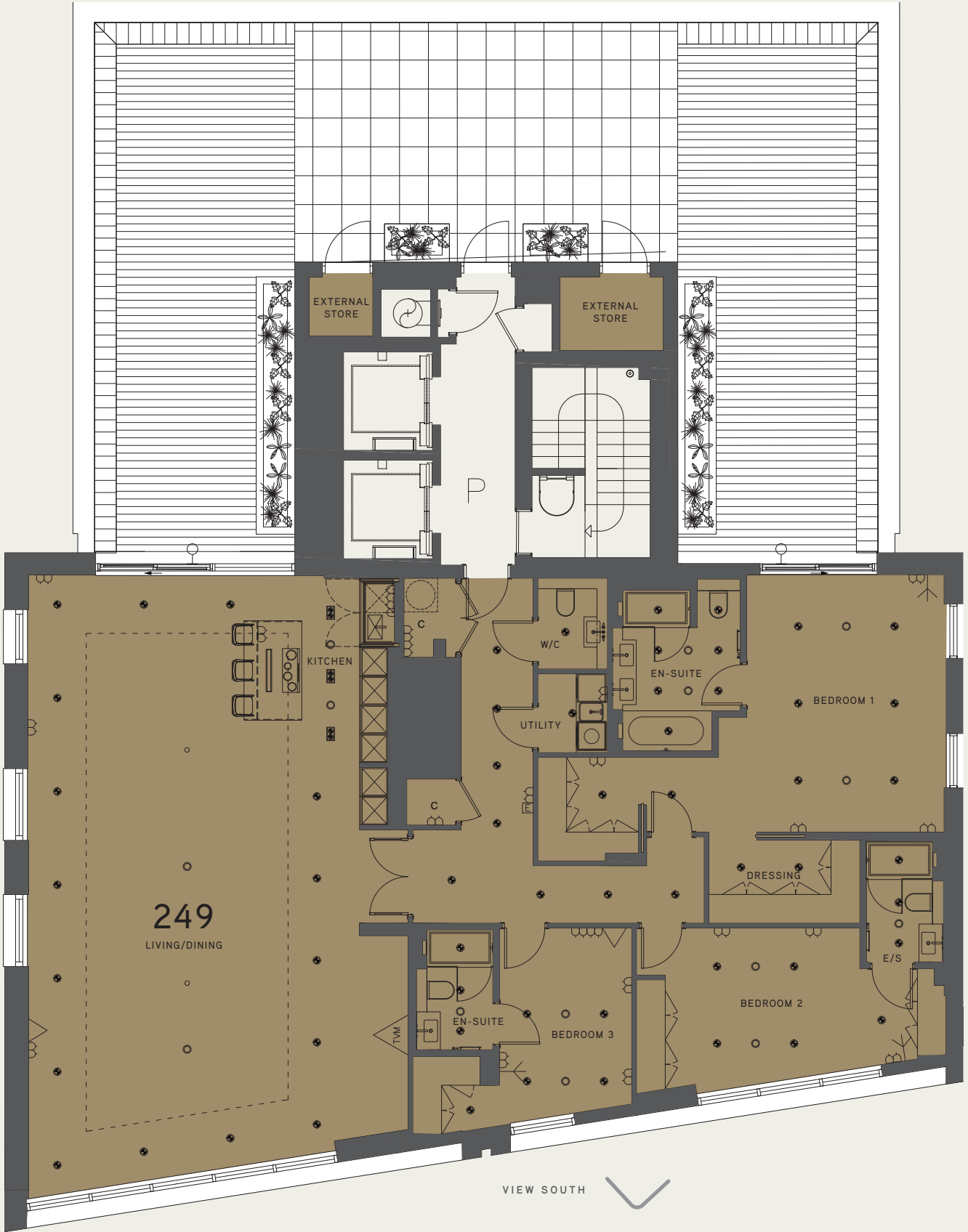
VIEW WEST



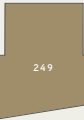
VIEW EAST



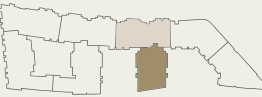
VIEW SOUTH



ELEVATION



FLOORPLAN



MASTERPLAN



Specification

A focus on premium materials and a palette of natural tones and textures, creates cool, calm interiors that are light and refreshing spaces to live in.



Computer generated imagery for illustrative purposes only

Sovereign Specification

General Specification	Bathroom Specification	Kitchen	Purchaser's Choices
Comfort Cooling to all apartments*	3 interior design colour palettes	3 interior design colour palettes	Choice of three colour palettes to include kitchens and bathrooms, full height wardrobes and flooring (Carpet to bedrooms, tiles to wet areas).
Contemporary Light Grey Oak veneer doors throughout	Porcelain wall tiling	Lacquer and veneer effect finish cabinets	
White painted skirtings and architraves	Porcelain floor tiling	Stainless steel kitchen sink	
Grey Oak effect and glass mirror wardrobes to bedroom 1 with illuminated hanging rail and drawers	Heated wall with rail and robe hooks	Siemens appliances	
White brushed steel electrical faceplates throughout (where exposed)	Villeroy & Boch sanitaryware	600mm oven	Communals
Wiring provided for sound system for future connection by the purchaser	Vado brassware	600mm hob	Interior designed Entrance Foyer
White LED ceiling downlighters throughout	Bespoke veneer effect vanity units with mirror and internal glass shelves	Fridge/freezer	Timber lift surround at every floor level
Dimmer switch to living room, kitchen and bedrooms	Marble counter top	Dishwasher	Landscaped communal gardens
BT, Sky and Broadband to be set up for the first year (basic package)	Bespoke bath panel to match vanity unit with LED feature light	Microwave	All corridors carpeted and decorated
Sky+HD point to living room and bedroom 1, including 42" LED TV to living room	Shaver socket in chrome finish	Warming drawer**	
Oversized front door	Glass bath shower screen	Wine fridge	
		Handleless drawers with feature LED lights	
		Stone worktops and splashback	
		Waste disposal unit	
		Washer/dryer to utility cupboard	
		Recycling bin	
		Wood strip flooring	

* The comfort cooling system is designed to provide an ambient temperature within the apartment for the majority of external temperatures. This may not be achieved in extreme temperature conditions.
** Excludes 1 bedroom apartments and is available to selected apartments only.



Elite Specification

As Sovereign Specification with the following upgrades:

Veneer and glass finish to kitchen cabinets

Marble wall and floor finish to bathrooms in lieu of tiles

Sound System (with speakers to all rooms) excluding the bathroom

Mood lighting controls to living room / kitchen

Veneer skirtings and architraves to match doors

Tiled entrance hallway

Leather effect wardrobes

Sky+HD point to living room and bedroom 1

55" LED TV to living room

Wiring for Sky+HD provided to living space and master bedroom

Tiled entrance hallway

Coloured video wall mounted entry phone

Purchaser's Choices

Choice of three colour palettes to include kitchens and bathrooms, full height wardrobes and flooring (Carpet to bedrooms, tiles to wet areas).



Penthouse Specification

As Elite with the following upgrades

Veneer/glass finish — Deeper kitchen units to maximise space

Instant hot water taps to kitchen

Double sided islands

Miele appliances

Hot plate / BBQ / hob

Wine cooler

Home automation system

Sky+HD point to living room and bedroom 1, including 70" LED TV to living room

High quality wood wardrobes

Stone profiled skirting to hallway

Deep pile carpet to bedrooms

Built in BBQs to terraces

TV to master ensuite

Coffee machine

Purchaser's Choices

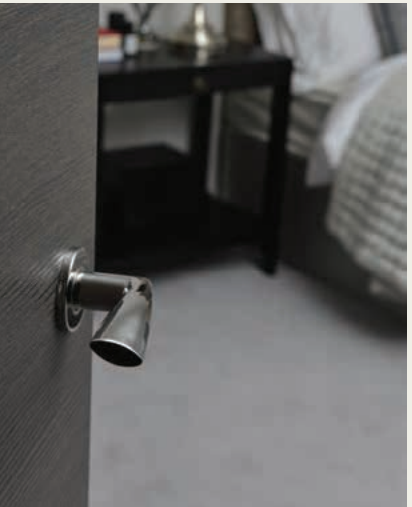
Choice of three colour palettes to include kitchens and bathrooms, full height wardrobes and flooring (Carpet to bedrooms, tiles to wet areas).

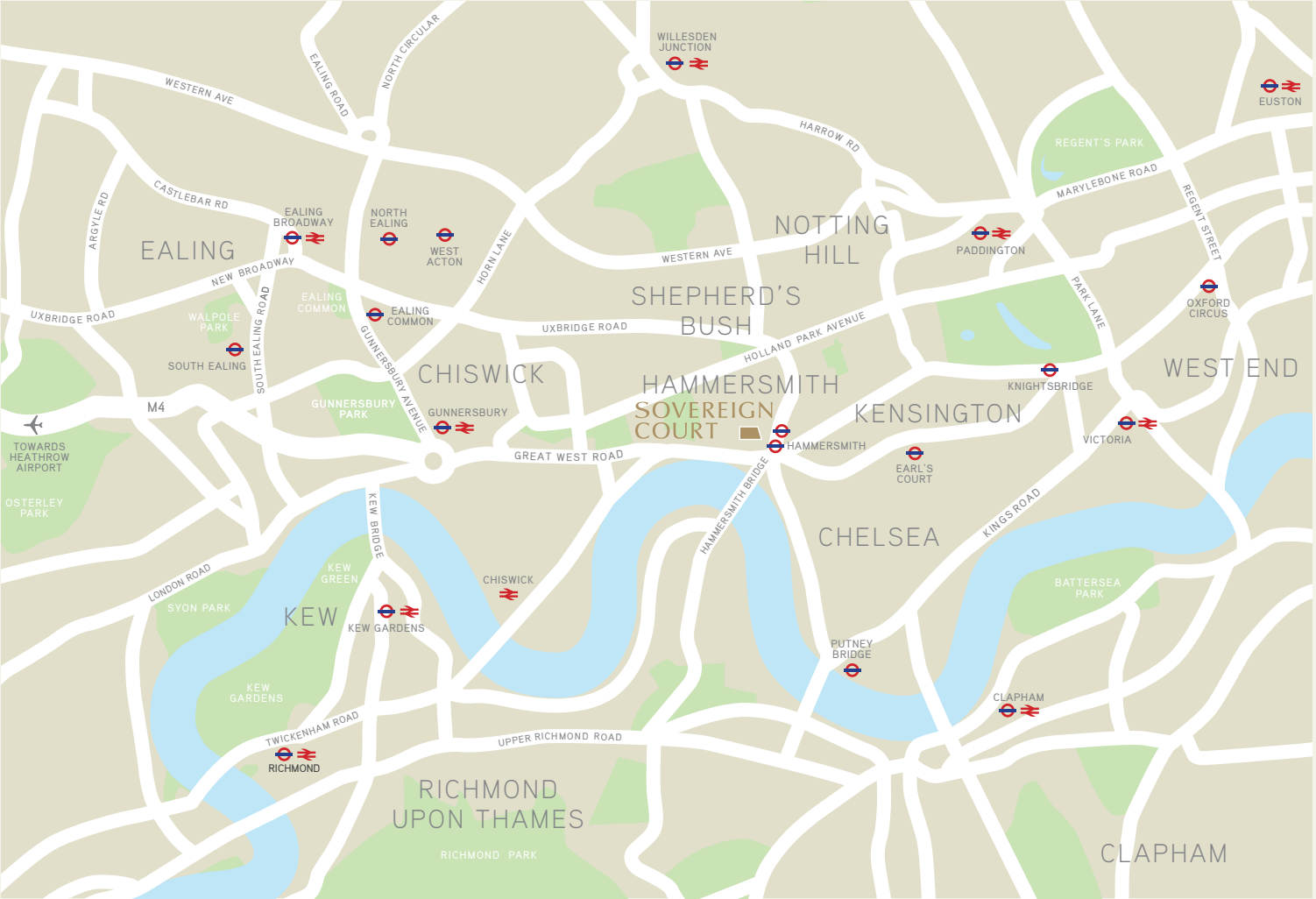
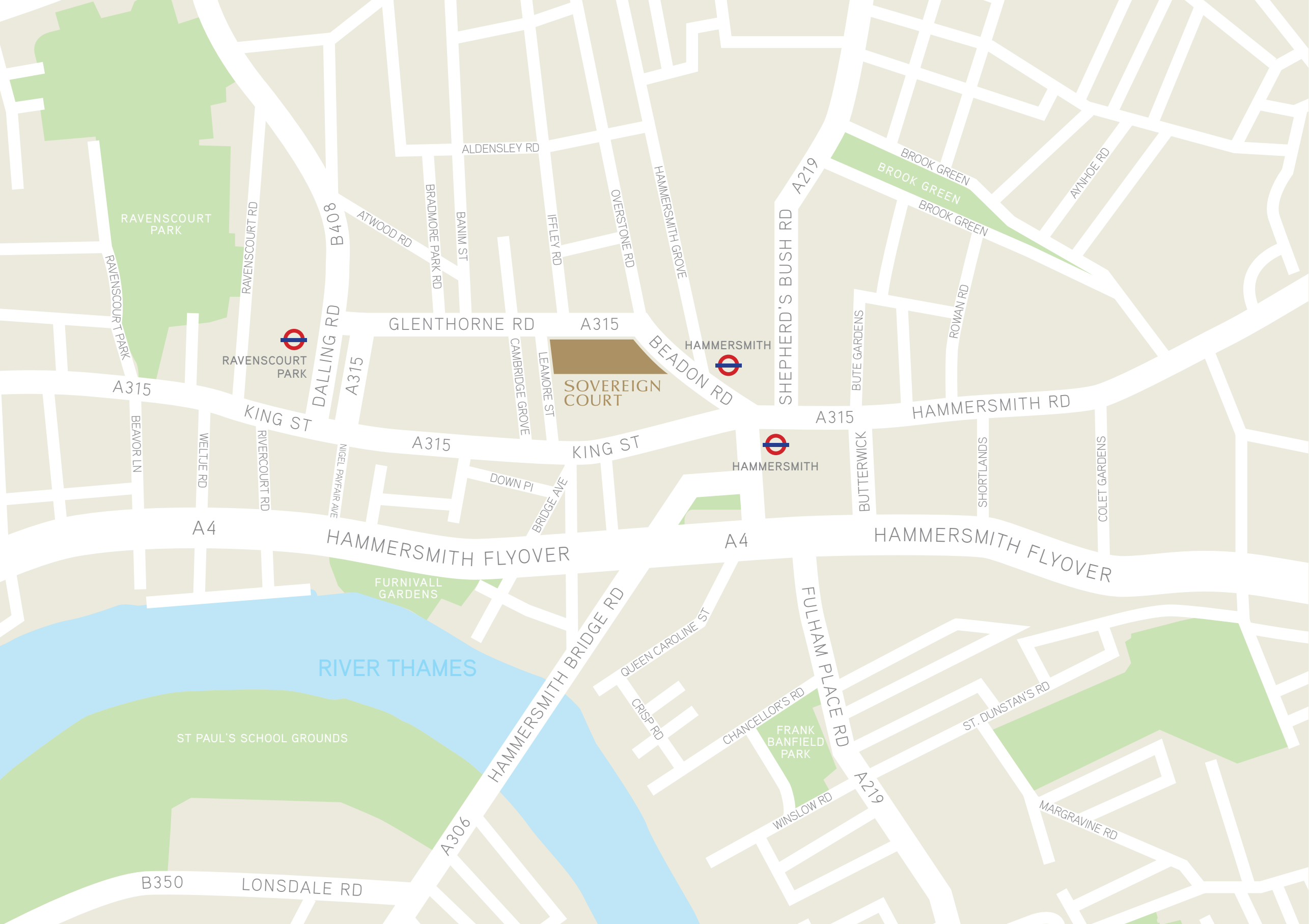
Penthouse Communals

Panelled — finish to be specified

Marble borders

Deep pile carpet





Maps are not to scale and show approximate locations only. The information in this document is indicative and is intended to act as a guide only as to the finished product. Accordingly, due to the St George policy of continuous improvement, the finished product may vary from the information provided.

These particulars should not be relied upon as accurately describing any of the specific matters described by any order under the Property.

Misdescriptions Act 1991. This information does not constitute a contract, or warranty. The dimensions given on plans are subject to minor variations and are not intended to be used for carpet sizes or items of furniture. Sovereign Court and any Block House name, are for marketing purposes only and are not intended to necessarily form part of the postal addresses.

100% of the inks used are vegetable oil based, 95% of press chemicals are recycled for further use and, on average 99% of any waste associated with this production will be recycled. This document is printed on Core Silk, a paper containing 100% virgin fibre sourced from well managed, responsible, FSC® certified forests. The pulp used in this product is bleached using an elemental chlorine free (ECF) process. T412/02/14.



Sovereign Court is located on Glenthorne Road in the heart of Hammersmith. The development is just a short walk (150m) from Hammersmith Underground Station, and is less than 20 minutes from Central London by taxi.

BY BUS:

Numerous bus routes run from Hammersmith Bus Stations, passing immediately outside Sovereign Court. The 27, 266, 72 and 33 all operate 24 hours a day.

BY UNDERGROUND:

Located in zone 2, Hammersmith Underground Station is on the District and Piccadilly lines. The Hammersmith & City and Circle lines are located in a separate station of the same name across the road.

BY ROAD:

From the M4 (eastbound), merge onto the A4 (Great West Road) signposted Hammersmith and Central London. Turn left into Rivercourt Road, then turn right onto the A315 (King Street). Turn left (one-way street) signposted Hammersmith. At the crossroads, turn right onto Glenthorne Road.

From Central London, take the A4 westbound, following signs to The West, Heathrow Airport and Hammersmith. At Hammersmith Broadway, continue forward onto the A219, then turn left onto the A315, signposted Chiswick. Keep in the right-hand lane, then turn right onto Studland Street (A315). At the crossroads, turn right onto Glenthorne Road.

CONTACTS

Sovereign Court, Sales & Marketing Suite,
Glenthorne Road, Hammersmith, W6 0LJ

020 8741 2400

www.sovereign-court.com

sovereigncourt@stgeorgewll.com



Genuine opportunity

London property remains one of the soundest investments you can make. In 2013 property values in London had exceeded their previous peak, achieved in 2007, and have continued to rise in 2014. In fact, property values in Hammersmith & Fulham and its neighbours are now more closely aligned with those in primes areas of New York and Hong Kong than other major UK cities.

Sovereign Court represents more than just a solid investment prospect. It's also your chance to acquire a magnificent new home in one of the world's most diverse and dynamic capital cities. Whether you're considering a move to W6 for work, education, investment, to start a business, or simply to enjoy the borough's diverse culture and relaxed riverside lifestyle, we're confident the build quality, surroundings and atmosphere of Sovereign Court will meet your needs perfectly.

We understand that investing in any property is a big decision, and you're sure to have questions. For more information about acquiring your new home at Sovereign Court, please contact us.



sovereign-court.com

